

<b><u>Name of Vessel in Fowey</u></b>			<b>Penleath</b>		
<b>Previous Names</b>			<b>Chester III Badia</b>		
<b>Year Built</b>	<b>1909</b>	<b>Official Number</b>	<b>125778</b>	<b>G.R.T.</b>	<b>150</b>
<b>Builders</b>		<b>Phillips and Sons, Dartmouth</b>			
<b>Dimensions</b>			<b>Length</b>	<b>Beam</b>	<b>Draft</b>
			<b>96'</b>	<b>20'6"</b>	<b>10'9"</b>
<b>Engines</b>	<b>500 B.H.P. Phillips and Sons, Dartmouth</b>		<b>Bollard pull</b>		
<b>Owners Built for</b>		<b>William Watkins, London</b>			
<b>History Before Coming to Fowey</b>			<b>Year</b> <b>1940</b> <b>1946</b>	<b>Ramsgate Requisition for Admiralty during war as HMS Chester</b>	
<b>Owners in Fowey</b>			<b>1-10-47</b> <b>April 48</b> <b>May 48</b> <b>1961</b>	<b>Fowey Towage Co</b> <b>Toyne and Carter</b> <b>John Toyne</b> <b>Fowey Harbour</b> <b>Commissioners</b>	
<b>History on Leaving Fowey</b>			<b>1962</b>	<b>London</b> <b>Scrapped by Marel and</b> <b>de Korte, Bruinidse,</b> <b>Rotterdam</b>	

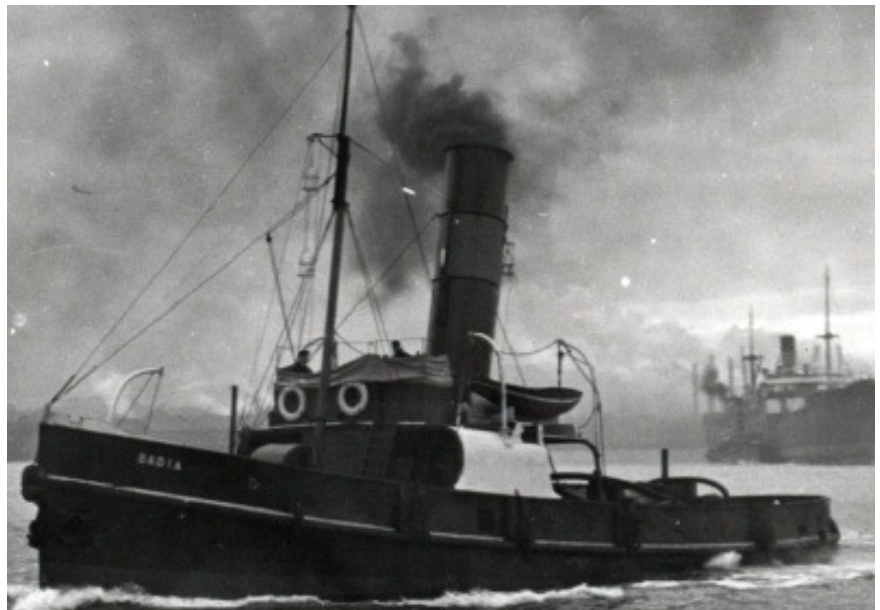
# PICTURES

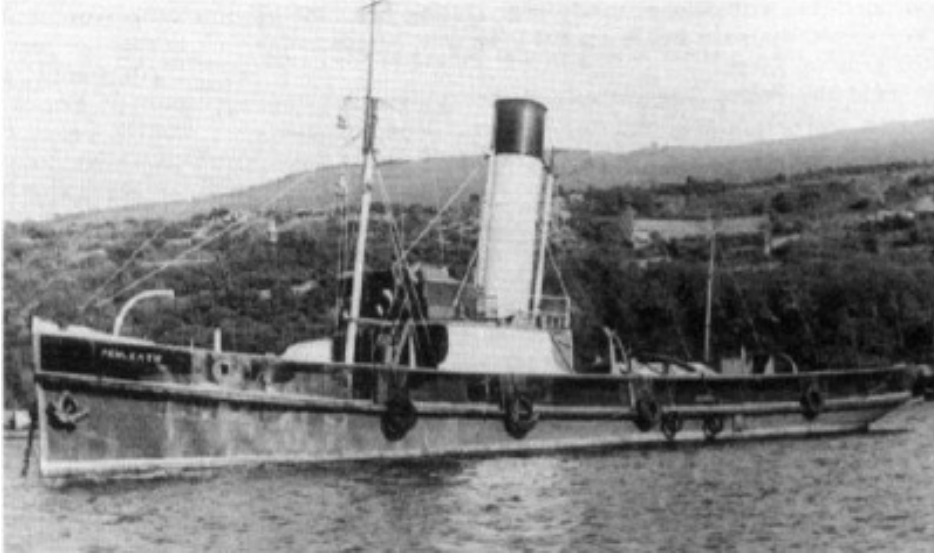
289



**Badia on slipway  
having Kort nosse  
fitted to improve  
towing  
performance**

**At work on  
the  
Thames**





**At her  
moorings off  
Pont Pill**