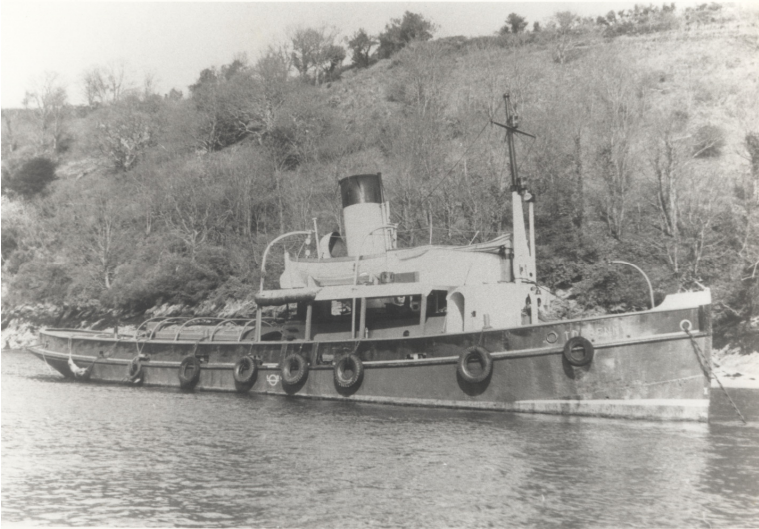


<u>Name of Vessel in Fowey</u>			Tolbenny		
Previous Names			F.T. Everard		
Year Built	1928	Official Number Call sign	160596 MPGB	G.R.T.	124
Builders		Fellows and Co Great Yarmouth, YN321			
Dimensions			Length	Beam	Draft
			83'	21'6"	11'
Engines	Plenty and Son, Newbury, 550 H.P 3 cylinder 107mn		Bollard pull		
Owners Built for			F .T. Everard and Sons, Greenhithe		
History Before Coming to Fowey			Year 16-04-40 4-06-46	Used for Admiralty service	
Owners in Fowey			1951 1961	Fowey Towage Co Fowey Harbour Commissioners	
History on Leaving Fowey			23-09-64 1972 1973 1980	W.J. Reynolds, Torpoint Renamed Tactful Cory Ship Towing, Plymouth Davis and Cann Ltd, Plymouth Scrapped at Laira bridge	

PICTURES

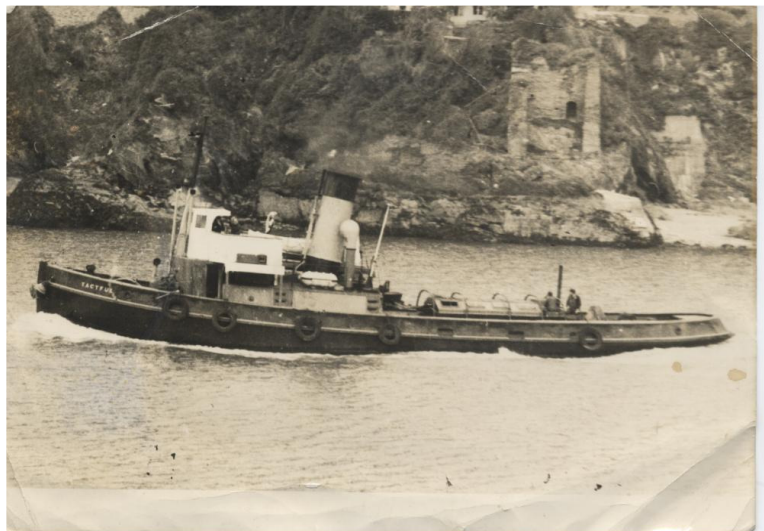


Tolbenny moored in the Underhill moorings



Towing a ship off the Harbour Office with Fowey Lifeboat in background

As the Tactful she was occasionally chartered to support the Fowey Tugs seen outward bound below Fowey Castle ruins





**The Tactful off
Riverside towing a ship
upstream**

**As the Tactful
towing a ship into
Mixtow reach**

