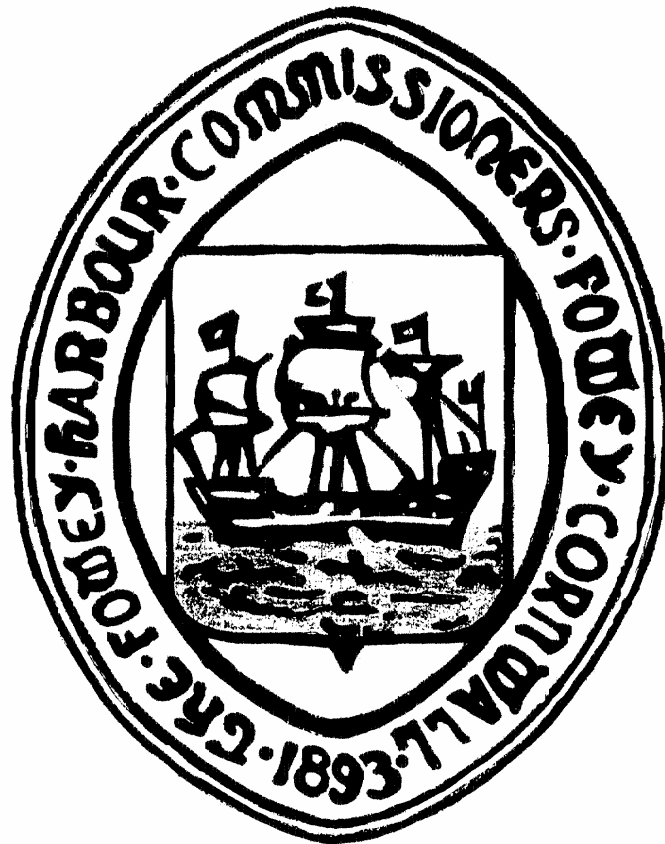


PART 4

FOWEY HARBOUR DATA DIRECTORY



Contents

Part 4: Fowey Harbour Data Directory

Section 22: Fowey Harbour Action Plan

22.1	Fowey Harbour – A strategy for Oil Pollution Clean Up	79
22.2	Action Plan.....	79
22.2.1	Pollution Incident Report received from outside FHC	79
22.2.2	Action Taken by the Harbour Office.....	80
22.2.3	Action Taken by the Chief Executive & Harbour Master	80
22.2.4	Tier 1 (Small Operational Spills)	80
22.2.5	Tier 2 (Medium Sized Spills within the Harbour Area) & Tier 3 (Large Spills requiring full involvement of other authorities.....	81
22.2.6	Action Taken by on Scene Staff / Supervisor(s).....	82
22.3	Clean-up Operation	83
22.4	Termination of Control Team & clean-up operation.....	85
22.5	Incident Review	86
22.6	Post Spill Monitoring.....	86
22.7	Principles	86

Section 23: Fowey Estuary Clean-up Options Matrix

23.1	Clean-up Different Types of Shoreline.....	87
23.2	What is a Clean Beach?.....	87
23.3	Fowey Estuary Clean-up Options Matrix	88

Section 24: Resources Directory

24.1	Locations of Oil Pollution Equipment Storage (Map).....	89
24.2	Pollution Equipment Locations & Quantities.....	90
24.3	Non FHC Equipment available in Harbour Area.....	94
24.4	Pollution Equipment Spill Kit Content List.....	95

24.5	Fowey Harbour Commissioners Craft & Pontoon Details.....	98
24.6	Oil Pollution Service Vessel	100
24.7	Pollution Control Oily Water Storage (Map).....	101
24.8	Pollution Control Oil Water Storage	102

Section 25: Fowey Harbour Road Access Points

25.1	Introduction	103
25.2	Ordnance Survey Grid reference for points of Access to the Estuary.....	103
25.3	Fowey Harbour Road Access points.....	105

Section 22: Fowey Harbour Action Plan

22.1 Fowey Harbour – A Strategy for Oil Pollution Clean Up

Objective: To use all available means to minimise the long-term ecological & economical damage of any oil spill and promote recovery of the area affected where possible.

Recovery is marked by the re-establishment of a healthy biological community in which the plants & animals characteristic of that community are present & are functioning normally. "Clark's rationale"

The six steps are:

- Spill Assessment - Identify and stop the source of pollution into the harbour
- Curtail the spread / control pollution
- Clean-up
- Terminate Clean-up
- Review clean-up success & Monitor long-term effects

In dealing with any spill, reference should also be made to the Fowey Harbour Commissioners Marine Operations Manual.

The Fowey Harbour Commissioners have an Oil Spill Response Box which contains essential information needed in the event of a spill (*Appendix 16*).

22.2 Action Plan

22.2.1 Pollution Incident Report Received from outside FHC.

Obtain all available information from the observers(s) who are reporting the incident (*Section 16.1.1 page 46*). Key details / questions to be asked:

- Date
- Time
- Full Name of Person Reporting incident
- Job Title (If appropriate)
- Details of company / organisation / home address
- Call back number
- Where is the Spill? (Latitude/longitude, Ordnance Survey Grid Reference, Where is it near [name of local landmark])
- What size is the spill? (Approximate amount, Area of cover [m²], how thick is it?)
- What type of Oil? (Oil, Crude, Diesel, Chemicals, etc.)
- Appearance of oil? (Liquid, floating solid, tarry lumps, semi liquid sludge, weathered oils, etc.)
- Source of the Pollution? (Can you ascertain where the pollution is coming from?)

- Has the source of the pollution been stopped?
- Is the pollution moving or staying in vicinity?
- Has any action been taken to prevent further spillage?

22.2.2 Action Taken by Harbour Office

- Harbour Master & Deputy Harbour Master are advised of the incident details. *(as recorded by section 22.2.1)*
- A complete Incident Log (*Section 19.2 page 65*) of events and actions taken to be started immediately, in the Harbour Office and also by on scene personnel.

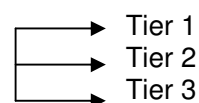
22.2.3 Action Taken by Fowey Chief Executive / Harbour Master

- Start an Incident Log (*Section 19.2 page 65*) of events and actions taken, in the Harbour Office and by on scene personnel.
- Deploy Harbour Patrol Staff or the most senior member of staff available in the vicinity of the reported incident to investigate (Via VHF radio Channel 12 or telephone Brazen Island (01726 870348). They will need to confirm reported details (*Section 22.2.1*), assess the incident, report and advise to the HM (or DHM) on the level of manpower and equipment resource mobilisation required (Tier 1, Tier 2, Tier 3) (*Follow Incident report forms Appendix 3*)
- With the incident assessment by on scene staff;

Can it be allowed to disperse naturally?

If Yes → Inform relevant Authorities using Notification Matrix (*Section 17.1 Page 53*) and complete pollution incident forms (*Appendix 3*)

If No → Determine level of response required



22.2.4 Tier 1 (Small Operational Spills)

- Mobilise Staff and equipment required for containment, recovery & clean-up (*Section 24.2, 24.3, 24.5*)
- Notify & Advise Authorities as per Notification matrix (*Section 17 page 53*) using report forms (*Appendix 3*) and initiate emergency communications plan (part of the Port Emergency Plan)
- Advise Local shell-fishermen and relevant businesses to deploy their own resources if necessary and to offer FHC assistance if they need it.

-
- Monitor Situation, obtain regular briefings from the Clean-up supervisor on the progress of the clean-up
 - After completion of clean-up complete Incident Log and Final report forms including costs incurred.
 - Advise relevant authorities Incident clean up is complete.
 - If it appears that the spill has escalated, proceed as per Tier 2 & Tier 3.

22.2.5 Tier 2 (Medium Sized Spills within the Harbour Area) & Tier 3 (Large Spills requiring full involvement of other authorities)

- Mobilise Staff and Equipment required for clean-up.
- Start to complete Incident Log (*Section 19.2 page 65*) of events and actions taken, in the Harbour Office and by on scene personnel. This will include all communications with contractors & hire companies.
- Contact Adler and Allan Limited (Tier II Contractor) and agree primary level of response required.
- Organise with on scene supervisors the deployment of this additional equipment on arrival
- Brief the Chairman & Board of Commissioners as per *Section 16.3 page 52*
- Contact Additional Sources of Equipment Hire as appropriate (*See appendix 13*)
- Establish communication link with the contractors Response Manager and issue a call back number. Brief Contractors Response Manager when on site.
- Determine extent of the incident in terms of:
 1. Any casualties?
 2. Any Safety hazards?
 3. Damage to facilities?
 4. Extent of Pollution (*Information should have been collected by completion of Sections 22.2.1, 22.2.3, 22.2.4*)
 5. Results of any actions taken so far?
- Set up a Marine Response Centre in the Harbour Office Board Room, or the portacabin located at Berrills Yard if appropriate.
- Security – visitors to the base of the control & clean-up activity areas should be identified & registered. Members of the public kept at a distance so as not to hinder work.
- Police & Local Council Assistance will be sought to keep members of the public away from the polluted areas and to ensure access for equipment and

clean-up are kept clear. Signs will be issued for beach / foreshore closure in line with Health & Safety requirements.

- Arrange Initial Public relations program (*Section 20 Page 69*) and location for them to have access to telephones, fax machines, space to work.

A nominated person will then deal with representatives of the media, keeping them up to date with events, actions and progress (visuals, posted notices, updates, etc.). Statements should be kept to the facts not opinions (*Appendix 12*)

- Establish Review / planning meetings at the Harbour Office. Continue normal communications and ad hoc briefings. Feedback information and action plans to the clean-up supervisors.
- Incident action plans for each polluted area should be developed every 12 hours
 - Safety Messages
 - Main Objectives
 - Review performance so far
 - Resources
 - Environmental Considerations
 - Communications
 - Weather information
- Obtain guidance and advice through consultation with NE, EA, Cornwall Council and other relevant bodies.
- Ascertain whether the incident is going to impact sensitive sites. Act accordingly in line with Clean up Matrix and guidance advice obtained above (*Section 23 and refer to Appendixes 7, 8, 9 & 10*).
- When the incident is terminated confirm incident closure with all agencies involved (*Section 17 page 53*).
- Complete the incident log(s) and ensure receipt of all reports from the Response supervisor(s).

22.2.6 Action Taken by On Scene Staff / Supervisor(s)

- A complete Incident Log (*Section 19.2 page 65*) of events and actions taken to be started immediately, by on scene personnel.
- If the source of the incident has been identified the on scene member of staff will ascertain
 - a) Has it been stopped?
 - b) Can the source be stopped?
 - c) If Yes, have measures been initiated to stop the source?
 - d) If No, Can the source be isolated to prevent spread?
- Report back to the Harbour Master (or DHM) complete details of the incident.

- For any incident requiring the spill to be contained the pollution barge will be mobilised to act as the centre and on scene control for any pollution containment clean-up operation. (See *Section 24.6*)
- A work boat with the float attached will collect additional equipment from Brazen Island.
- Deploy equipment that arrives on scene from Contractors and other sources as directed by HM (DHM) chain of command.
- Assist local businesses / shell-fishermen to deploy their equipment as directed by the HM.
- Leisure & other craft may have to be moved to assist operations and prevent contamination by oil.
- If size of incident operation requires, the Fowey Harbour Commissioner's, other floating pontoon systems may be used to assist. As directed by HM.
- Take a sample in line with MCA STOp Notice 4/2001 (*Appendix 2*) of the pollutant and send away for analysis. Make sure sample is fully referenced to time taken, location, date and incident reference.
- Take photographs throughout incident, to show extent of pollution, its source and clean up in progress.

22.3 Clean-up Operation

The Harbour Commissioners have a large number of marine craft and resources with experienced and well-trained staff well versed in the logistics of deployment of plant and equipment within the Harbour area. The primary reaction and deployment to contain a spill will be from the equipment and resources stored afloat (*Section 24.2*)

22.3.1 Wherever possible the natural process of evaporation and dispersal as clean up will be allowed to take place. Where the nature of the pollution or the sensitivity of the area, make this option not possible the following cleaning methods will be adopted separately or jointly;

- a) Absorption using specialised materials
- b) Pumping oil from the surface to containment
- c) Physical cleaning of shoreline, etc.

22.2.2 Oil absorbent booms will be deployed inside the contained area. (In some cases these booms may be deployed as the first response and containment booms deployed outside).

Booms

- Protection, Deflection & Containment
- Solid skirt, Inflatable, beach sealing & sorbent
- Operational limitations ~ flowing water (Force 4 winds / choppy they do not work)
~ Personnel skills
~ Deployment needs

- Successful booming depends on constant, day & night supervision. Do not over stretch capabilities & try to protect too many locations
- Recovery, cleaning, remediation & stowage

22.3.3 If oil can be directed into areas of the Harbour which are clear of environmentally sensitive categorisation(s) and accessible for shore clean up, booming will be deployed accordingly.

22.3.4 With the aid of workboats and/or ropes to booming points absorbent booms pads and other materials will be worked to cover the contained area.

22.3.5 Absorption materials once saturated with oil will be removed, put into Hazardous Waste bags and placed in holding skips until specialised receptacles provided by contractors are on site. Transfers will then be made at the designated sites within the jetty area.

22.3.6 Fowey Harbour Commissioners will ask IMERY'S Minerals Limited for assistance in provision of sites, cranes and access via private roads or rail to the port area. Assistance will also be sought in providing access for specialised contractors to the designated area in order to assemble plant equipment prior to deployment. Fowey Harbour Commissioners staff will attend to co-ordinate deliveries and outward movements and recording such as part of the incident log.

22.3.7 As soon as possible on arrival of specialised skimmers, rope mops and other equipment the operation to recover oil from the water surface will commence. Where possible, afloat storage will be utilised with pump out to road tankers or shore within the port area.

Skimmers

- Device to recover spilt oil ~ mechanical & Oleophilic
- Weir, vacuum & mechanical belt
- Disc, rope, belt & brush
- Operational limitations
 - ~ power supply
 - ~ Personnel skills
 - ~ Deployment needs
- Recovery, cleaning, remediation & stowage

22.3.8 Mobile storage tanks will be placed in areas where shore access is possible for future handling, with advice from the Environment Agency.

22.3.9 If it is not possible to isolate the oil afloat and it reaches the shore, a physical clean up of the shoreline, harbour structures and craft within will commence using all the mechanical and manual means available. This will be carried out in conjunction with other agencies and contractors using their staff, equipment and expertise.

(Section 23 Clean up Options and refer to appendix 7, 8, 9 & 10)

22.3.10 Contaminated containment material will be held initially in skips until specialised contractors plant is made available.

22.4 Termination of Control team & Clean-up Operation

The activity of the spill control team will usually terminate when there is no further spill potential and when the local clean-up teams are fully versed in the necessary clean-up operations. Disposal and transportation of the collected oil and oily debris may at this stage still cause some problems. This would under normal circumstances not justify maintaining the operating base or having the whole spill team available.

Remember the reason/objective of the clean-up operation

On the Water ~ minimise pollution damage

On the Shore ~ restore the use or value of the polluted area whilst minimising further damage

Termination considerations for clean-up on the water

- Measures are no longer effective
- Further clean-up is likely to cause unnecessary damage
- Levels of response is out of proportion to amount of oil on water
- The costs are exceeding the likely benefits

Termination considerations for clean-up on the shoreline

- Satisfied commitments agreed in this plan
- Further clean-up is likely to cause more damage than residual oil
- Point of diminishing returns reached
- When costs of further clean-up are high in proportion to the area's importance
- When economic loss caused by non-use of areas being clean exceeds any benefits
- When further expenditure could limit compensation available for economic loss claims

(See Appendix 9 How Clean is Clean)

22.5 Incident Review

- Cause
- Fate & effects
- Response measures taken
- Problems & site rehabilitation
- Operations successes & failures

Did the incident response remember the original objectives?

- Safeguarding reputations
- Protection of the environment
- Safety to human life
- Consideration of operational consequences

Review response

Incident Profile	V	Plan Profile
Plan Execution	V	Actual Needs

Net environmental & economical benefit.

22.6 Post Spill Monitoring

After clean up is complete, most areas depending on the severity of the spill will be subject to monitoring for ecological recovery / effects and economic recovery.

22.7 Principles

Throughout the plan while dealing with any oil pollution in Fowey Harbour the aim will be able to mobilise containment equipment rapidly, reducing the risk of spread and endangering the 25 miles of shoreline within the Harbour area.

Every effort will be made, having stopped the source of pollution, to contain the pollution afloat in a restricted area.

Sensitive areas and property will be protected as priorities. Purely cosmetic operations will be avoided.

Where it is not possible to contain oil pollution it will be directed into those parts of the harbour where it can be controlled and then cleaned up in an environmentally acceptable, efficient and cost effective way.

Spills entering the harbour from seaward sources will, where possible will be contained in Readymoney Cove. Contaminated sand will be removed from the area and will be quickly replenished with sand resources from within the harbour area.

In minor amenity use areas of the harbour, the ecologically most desirable course of action may be to allow the beached oil to degrade by natural processes. There needs to be a clear agreement between objectives for clean-up and with those who are actually doing the clean-up

Section 23: FOWEY ESTUARY CLEAN-UP OPTIONS

23.1 Clean-up Different types of shoreline

Clean-up of amenity areas should be given preference until sound advice is available on the optimum action to be taken with respect to ecologically sensitive areas.

As a guideline *Section 23.3* on the next page gives a starting point for developing clean-up action plans for different types of shoreline. *Appendix 10* gives some further information on the Do & Do Not for certain types of shoreline with regard to clean-up strategies.

Beach Data and Clean-up Guidelines have been produced for the Fowey Estuary outlining access information and the provision of other facilities. These information sheets form part of the Fowey Harbour Commissioners Oil Spill Response Box (*See appendix 16*).

23.2 What is a clean beach?

A beach can only be regarded as clean when the people who have the most pressing interest are satisfied.

The Incident controller should discuss with interested bodies to what extent clean-up should be taken and continue to, preferably obtaining suggestions as to when the clean up should stop!

The self cleaning capability of a shoreline should also be taken into account.

See appendix 9

23.3 FOWEY ESTUARY CLEAN-UP OPTIONS MATRIX

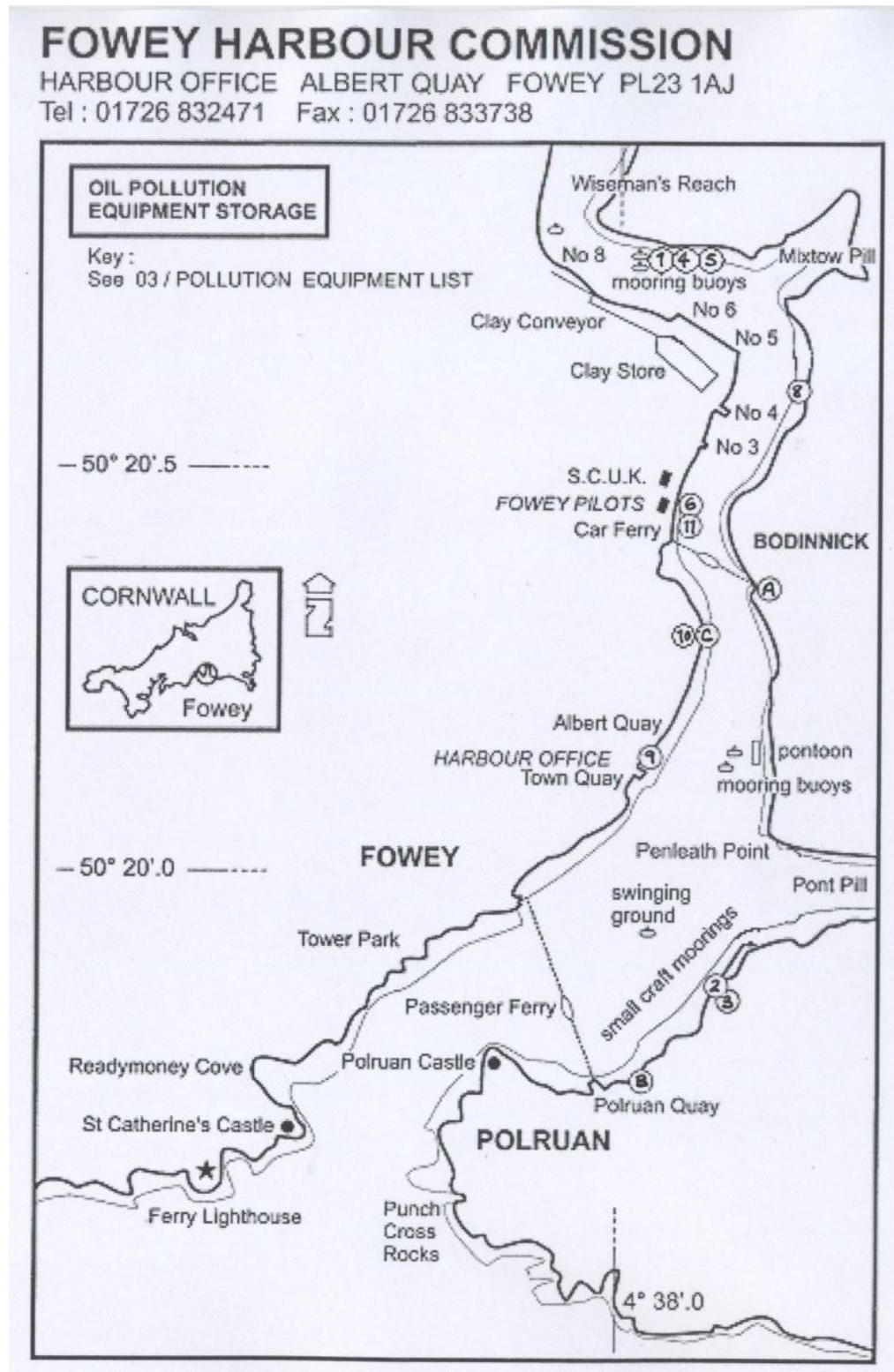
CLEAN UP OPTIONS		SHORE / COAST TYPE							
		Salt Marshes	Tidal Mud Flats	Rocky Coast	Mixed Sand & Gravel Beach	Course/fine sand beach	Exposed Rocky Headland	Concrete Walls & Slipways	Boats
NATURAL CLEAN - UP	Leave Alone		P	P	A	A	P	T	D
MANUAL METHODS	Deployment of containment booms	A	A	A	A	A		T	D
	Use of sorbent material	A	A	A	A	A		A	A
	Collection of Oiled Debris	T	T	A	P	P		A	
	Higher water mark debris collection	A	A	A	P	A	A	A	
	Cutting and removal of oiled vegetation	T			A Back shore	A Back shore			
MECHANICAL METHODS	Recovery of oil by skimming and pumping to temporary storage area	A	A	A	A	A		P	P
	Removal of oiled surface sediments using earth moving equipment	D	D	T	A	A			
	Hosing/flushing	T	T	A	A	A	A	P	A
	Hot water / steam treatment	D	D	T	T	D	T	A	P
BIOREMEDIATION	Oil biodegradation DEFRA Approval required	P	P	P	A	A	A		
CHEMICAL METHODS	Approved dispersants DEFRA Approval required	D	D	D	D	D	D	T	T
	Dispersing gels DEFRA Approval required	D	D	D	D	D	D	T	T

Key:

P	Preferred option / method. Where more than one preferred option is given, conduct both activities simultaneously
A	Alternative Options / Methods. One or more of the alternative options may be used
T	To be avoided
D	DO NOT USE!!
	Not Applicable

Section 24: Resources Directory

24.1 Locations of Oil Pollution Equipment Storage



24.2 POLLUTION EQUIPMENT LOCATIONS & QUANTITIES

LOCATION OF EQUIPMENT	ITEM	No.'s IN STORE	COMMENTS	Equipment will ABSORB up to (Litres)
1. POLLUTION BARGE	LIGHT OIL KITS (MSAK 200L)	8 KITS	Arrow Chemicals	1600
	HEAVY OIL KITS (MSAK 200H)	4 KITS	Arrow Chemicals	800
	INFLATABLE CONTAINMENT BOOMS	12	240 metres	
	BEACH GUARDIAN CONTAINMENT BOOMS	7	140 metres	
	COLLAPSIBLE TANKS	2	1500 gallon capacity	
	AIR PUMP FOR BOOMS	3		
	WATER PUMP FOR BOOM	1		
	TOWING BRIDLES	6		
	BOOM JOINING FLOATS	2		
	BOOM JOINING HOSES	4		
	BOOM REPAIR KIT	1		
	ABSORBENT PILLOWS	60		
	ABSORBENT PADS	125		
	ABSORBENT BOOM	36	3m length, 20cm diameter	
	ABSORBENT MINI BOOMS	13	1.5m length	
	SUMP PILLOW	10		
	BILGE SOCK (LARGE)	8		
	BILGE SOCK (SMALL)	6		
	ABSORBENT MEMBRANE	1 BAG		
	'PYRASORB' – ABSORBENT GRANULES	1 BAG (35 litres)		
SPECIAL WASTE BAGS & TIES	400			
PLASTIC BAGS & TIES	100			

POLLUTION SUITS	41		
WORK OVERALLS	6		
DISPOSABLE OVERALLS	36		
NITRILE GLOVES	67		
PVC GLOVES	6		
GOGGLES	45		
DISPOSABLE MASKS	37		
RESPIRATOR MASKS	23		
RESPIRATOR MASK CARTRIDGES	16		
SAFETY HELMETS BLUE	4		
EAR DEFENDERS	9		
TORCHES	4		
HIGH VIS VESTS	24		
HIGH VIS JACKETS	5		
BROOM	3		
MOP	6		
SHOVELS	3		
HOSE FLEXIBLE	2		
PORTABLE LIGHTING	4 UNITS	24 Volts D.C.	
CORDAGE 12MM	1 COILS		
LEADED ROPE 16MM	1 COILS		
ANCHOR	2		
SALVAGE/PRESSURE PUMP	1		
FIRE PUMP (300 gallons/minute)	1		
OILY WASTE BAGS & TIES	200		
FHC BLUE BAGS	1000		
FHC OIL SPILL PLAN	1		
TOTAL			

LOCATION OF EQUIPMENT	ITEM	No.'s IN STORE	COMMENTS	Equipment will ABSORB up to (Litres)
2. BRAZEN ISLAND MAINTENANCE YARD	3M HSRK 75 SPILL KIT	1 kit		75
	ABSORBENT BOOM	1 bag	20 metres	
	ABSORBENT ROLL	1 roll	40 metres	
	ABSORBENT PADS	1 box	100 per box	
	ABSORBENT PILLOWS	2 boxes	16 per box	
	BOXES 3M ABSORBENT	9 boxes	1.5 metres per box	
	'PYRASORB' ABSORBENT GRANULES	1 bag (35 litre)		
	POLLUTION SUITS	8		
	P.V.C. GLOVES	16		
	NITRILE GLOVES	20		
	LEATHER GLOVES	8		
	EAR DEFENDERS	8		
	GOGGLES	8		
	DISPOSABLE MASKS	20		
	RESPIRATOR MASKS	8		
	RESPIRATOR MASK CARTRIDGES	8		
	WORK OVERALLS	16		
	DISPOSABLE OVERALLS	15		
	FHC BLUE BAGS	5 BOXES	1000 bags	
	OIL SPILL BAGS	2 BOXES		
	CHEMICAL SPILL BAGS	2 BOXES		
	BROOMS	2		
	MOPS	2		
BAG OF RAGS	1			
WATER RINSABLE DEGREASER	8 GALLONS			

LOCATION OF EQUIPMENT	ITEM	No.'s IN STORE	COMMENTS	Equipment will ABSORB up to (Litres)
3. STORAGE	SKIPS FOR REFUSE	2	Viridor Waste Management Capacity: 14cuyds each	
	WHEELIE BINS SKIPS	4	Bagged waste Capacity: 1100 litres each Various capacities which could be utilised if necessary	
4. TUG TREGEAGLE General Operational Use	MILLCLIFF GRAB PACK	1	70 MGP Lightweight Easy To Carry Spill Kit	70
	3M HSRK 26 SPILL RESPONSE KIT	1		26
5. TUG MORGAWR General Operational Use	GRAB BAG	1	Lightweight Easy To Carry Spill Kit	
	SPILL RESPONSE KIT	1		
6. PILOT CUTTER GRIBBIN	GRAB BAG	1	Lightweight easy to carry spill kit	
8. SMALL TUG/WORK BOAT PENLEATH	MILLCLIFF GRAB PACK	1	70 MGP lightweight easy to carry spill kit	70
9. PATROL BOAT ZEBEDEE	ARROW SPILL RESPONSE KIT	1	45 MGP Lightweight easy to carry spill kit	45
10. BERRILLS YARD PORTACABIN	LUBETECH SPILL RESPONSE KIT	1		60
11. PILOTS OFFICE	LUBETECH SPILL RESPONSE KIT	1		60

24.3 NON F.H.C. EQUIPMENT AVAILABLE IN HARBOUR AREA

LOCATION OF EQUIPMENT	ITEM	NOS IN STORE	COMMENTS	Equipment will ABSORB up to (Litres)
A. BODINNICK FERRY	OIL SPILL KIT		to be advised	
B. TOMS BOATYARD	ABSORBENTS		to be advised	
C. FOWEY LIFEBOAT	SALVAGE /H.PRESSURE PUMP			Litres 4983 metres boom 380

24.4 POLLUTION EQUIPMENT SPILL KIT CONTENT LIST

CONTENTS LIST OF SPILL KITS	NUMBERS	Individual Equipment ABSORB up to (Litres)	COMMENTS	Equipment will ABSORB up to (Litres) in total
3M HSRK 75 SPILL RESPONSE KIT		75		75
88 litre high density poly container and lid	1			
P 110 Universal Sorbent Sheets	100			
P 200 Universal Sorbent Minibooms	8			
P 300 Universal Sorbent Pillows	12			
Temporary disposal bags and ties	5			
instruction guide on disposal	1			
3M HSRK 26 SPILL RESPONSE KITS		26		156
55 Litre resealable high density poly bin with lid and securing ring	1			
P110 Universal Sorbent Sheets	10			
P200 universal Sorbent Mini Booms 120x7.5 cm	5			
P300 Universal Sorbent Pillows	5			
instruction guide on disposal	1			
wall mounting bracket	1			
ARROW CHEMICALS MSAK 200L LIGHT OIL KIT	8 KITS	200		1600
oil only pads	100	1 litre each	covers up to 25 sq metres 48 x 43cm	
oil only pillows	10	4 litres each	40 x 50 cm	
oil spaghetti particulate	1			
oil only bonded seeping roll	1	125 litres	48cm x 44 metres	
special waste bags with ties	10			
high tear resistance contents bag	1			

CONTENTS LIST OF SPILL KITS	NUMBERS	Equipment will ABSORB up to (Litres)	COMMENTS	Equipment will ABSORB up to (Litres) in total
ARROW CHEMICALS MSAK 200H HEAVY OIL KIT	4 KITS	225	covers up to 25 sq metres	900
Heavy oil only pads	100	1 litre each	48 x 43cm	
Heavy oil only skirts (pom poms)	10			
Oil particulate	1			
Heavy oil only bonded seeping roll	1	125 litres	48cm x 44 metres	
Special waste bags with ties	10			
High tear resistance contents bag	1			
ARROW SPILL RESPONSE KIT		30		30
Socks (7.5cm x 1.2mt)	3			
Pads (51cm x 41cm)	30			
Goggles	1			
Gloves	1 pair			
disposal bag with ties	5			
Pillows 10P	2			
MILLCLIFF GRAB BAG 70MGP		70		70
Pads 100	25			
410 boom 3 metres long	1			
oil dri poly socks	2			
pillow 10P	2			
disposal bags with ties	6			

CONTENTS LIST OF SPILL KITS	NUMBERS	Equipment will ABSORB up to (Litres)	COMMENTS	Equipment will ABSORB up to (Litres) in total
GRAB BAG				
Absorbent sheets	24			
Absorbent sausages	3			
Absorbent pillows	3			
Disposal bags	6			
Gloves	1 pair			
Goggles	1 pair			
LUBETECH SPILL RESPONSE KIT – OIL		60		
Product Number 24-1060				
510mm x 410mm pads	30			
760mm x 1.2mt socks	4			
380mm x 230mm pillows	4			
Goggles	1			
Gloves	1 pair			
Disposal bags & ties	5			
Wall mounting bracket	1			
SPILL RESPONSE KIT				
Absorbent sheets	10			
Absorbent mini booms	5			
Absorbent pillows	5			
Disposal bag	1			

24.5 Fowey Harbour Commissioners Craft & Pontoon Details

Craft

Craft type Craft Details	Harbour Tug	Harbour Tug	Small Tug/ Workboat	Pilot Cutter
Name	Tregeagle	Morgawr	Penleath	Gribbin
Official number	304176	365817	n/a	704304
Length O.A	28.2	28.45	12.72	14.82
Breadth	7.19	8.5	4.2	4.17
Draft	3.36	4.5	1.66	1.14
G.R.T.	131.1	223	n/a	
Engine Type	Polar	Voith tractor	2 x Gardners	2 x Scania DSI14
B.H.P.	1000		360	884
Speed	12 kts	12 kts	9 kts	22kts
Bollard pull	15 tonne	23.5 tonne	3 tonnes	
Normal crew	4	4	2	2
Built	1964	1980	1980	1991

Craft type Craft Details	Steel Workboat	Steel Workboat	Fibreglass Workboat	Fibreglass Workboat
Name	Sea Lion	Sea Tiger	F.H.C. 4	F.H.C. 17
Length O.A.	6.2	6.2	5.8	5.8
Breadth	2.6	2.6	2.44	2.44
Draft	0.9	0.9	0.6	0.6
Engine	Beta	Beta	Beta	Beta
Speed (knots)	6	6	4	4
Normal crew	1 or 2	1 or 2	1 or 2	1 or 2

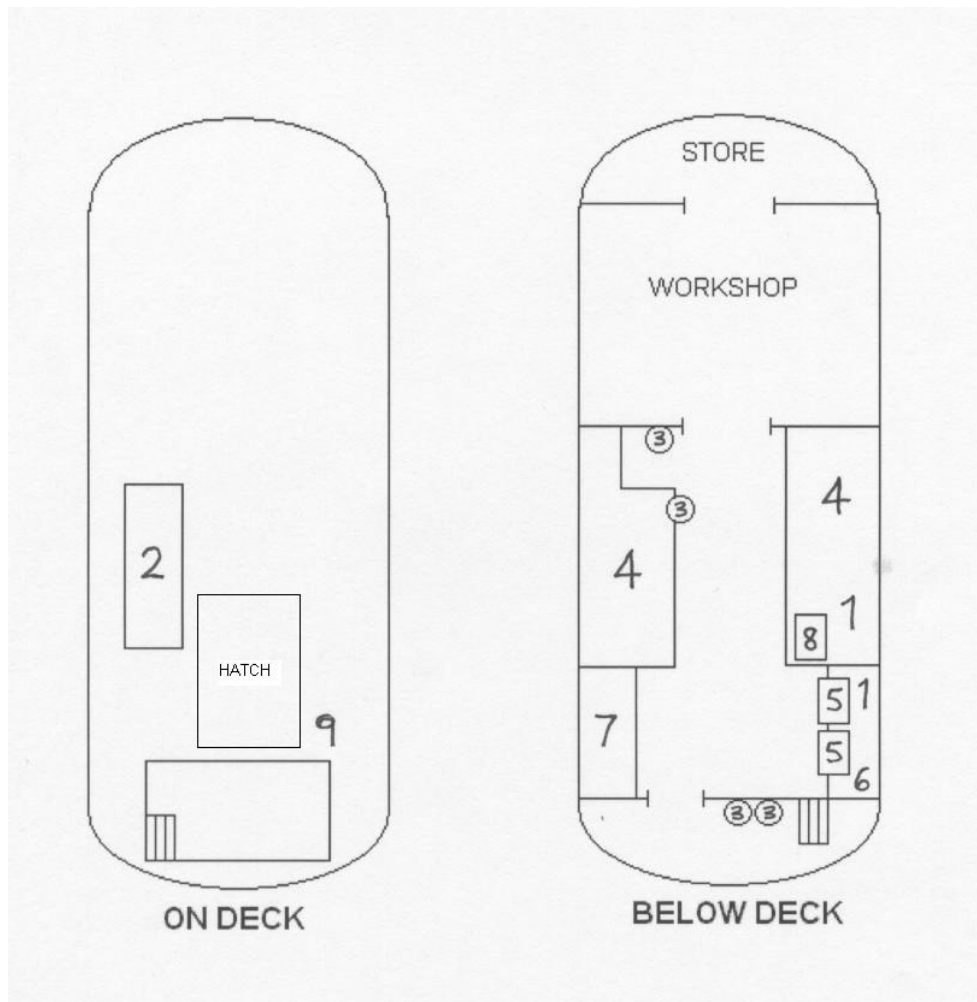
Craft type Craft Details	Fibreglass Boston Whaler	Pioneer Multi	Fibreglass Boston Whaler	Fibreglass dory	Fibreglass Patrol Boat
Name	Florence	Brian	Dougal	Small Dory	Zebedee
Length O.A.	5.79	5.02	5.5	4	6.2
Breadth	2.43	2.03	1.92	1.74	2.5
Draft	0.85	0.4	0.8	0.4	0.85
Engine	Mercury 115hp	Evinrude 50hp	Evinrude o/b	Mariner o/b	Beta
Speed (knots)	35	25	25	8	4
Normal crew	1 or 2	1 or 2	1 or 2	1	1 or 2

Pontoons

Craft type Craft Details	Pollution barge	Mooring Maintenance / oil pollution pontoon	Steel Pontoon	Steel Pontoon	Rubbish Float	Mooring Float
Description	Converted cargo barge, decked in Store and workshop	Decked in twin hull pontoon Winch and hyab crane	Section Pontoon flat deck	Rough work Pontoon		Small Maintenance with winch
length O.A.	20 m	12.4 m	8.1 m	13.8 m	8.9 m	7.6 m
Breadth	5 m	7.1 m	3.1 m	3.3 m	4.2 m	4.8 m
Draft	1m	0.9 m	0.4 m	0.4 m	0.6 m	0.5 m
G.R.T.						
Engine Type	n/a	Lister				Petter
B.H.P.						
Movement means	Penleath or tugs	Penleath or pilot boat	work boat	work boat	work boat	work boat
normal crew	Tug crew					
lifting capacity		15 tonnes	5 tonnes	7 tonnes	4 tonnes	1.5 tonnes
Storage capacity litres	Tanks to be put onboard	4500	7000			

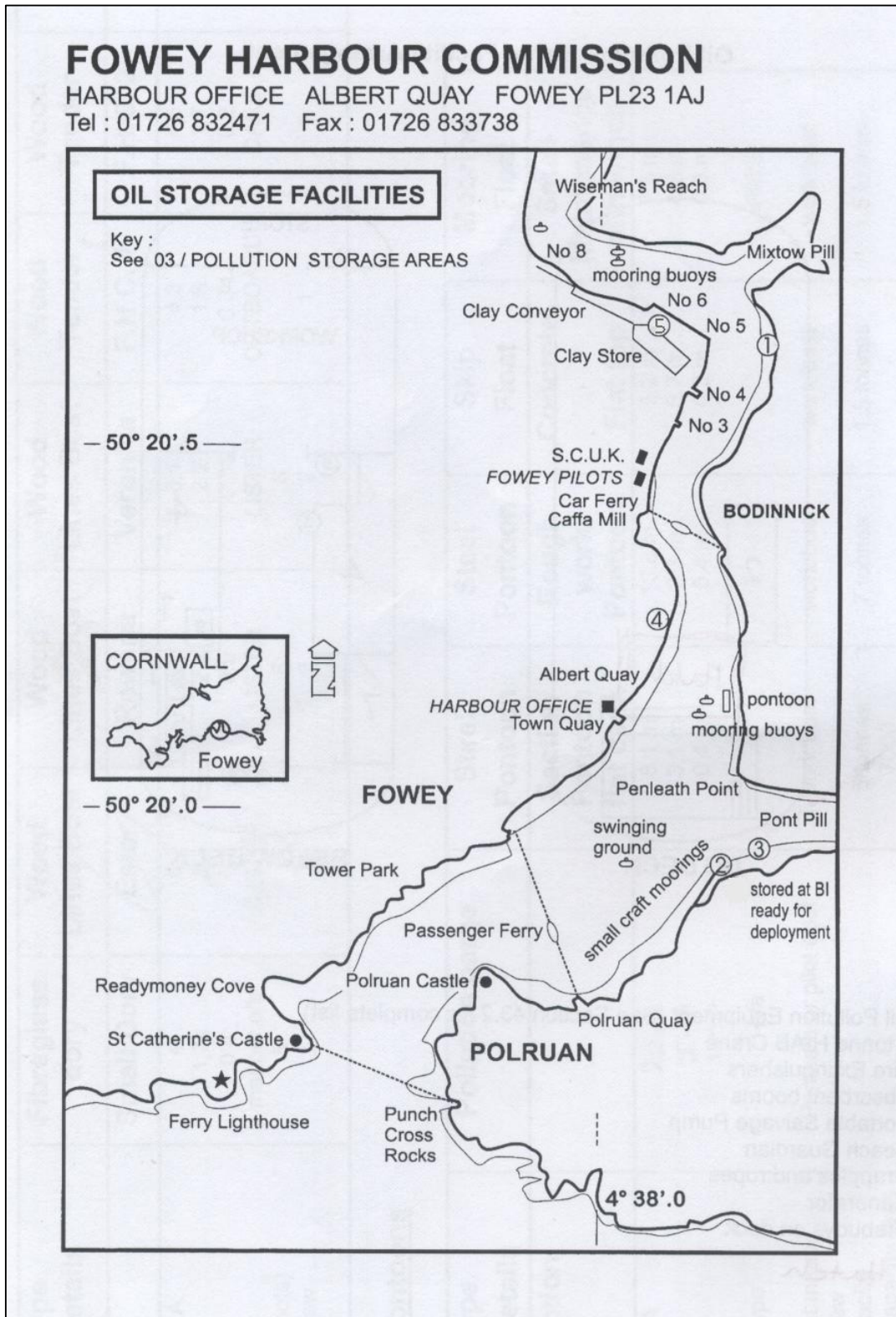
24.6 Oil Pollution Service Vessel

Oil Pollution Barge Facility Arrangement



1. Oil Pollution Equipment (See Section 43.2 for complete list)
2. 2 tonne HIAB Crane
3. Fire Extinguishers
4. Absorbent booms
5. Portable Salvage Pump
6. Beach Guardian
7. Grapples and ropes
8. Generator
9. Lifebuoys on deck

24.7 POLLUTION CONTROL OILY WATER STORAGE



24.8 POLLUTION CONTROL OILY WATER STORAGE

LOCATION	TYPE OF STORAGE	CAPACITY IN TONNES	CAPACITY IN LITRES	COMMENTS
1. MOORING MAINTENANCE / OIL POLLUTION PONTOON	FOUR 1200 LITRE TANKS	4.8	4800	Interconnected in series of two self levelling for filling and pump out Can be pumped or sucked to shore reception or into floating reception
2. BRAZEN ISLAND POLLUTION CENTRE (WITHIN BUNDED AREA)	ONE 12000 LITRE TANK	12	12000	
	TWO 2500 LITRE TANKS	5	5000	
	THREE SELF BUNDED TANKS	3.6	3600	Enclosed in lifting frame to enable craneage onto Jetties Pumped or sucked to tanker at Jetties
	45 gallon drums			Available if necessary
3. FUEL / OILY WATER FLOAT	FLOAT FUEL OIL STORE	7	7000	pumped ashore by mobile pump to Brazen Island or Jetties
4. BERRILLS YARD DIRTY OIL TANK	SELF BUNDED TANK	0.45	450	Gravity drained for emptying at Brazen Island or Jetties
5. TEMPORARY STORAGE	ON SITE LOCATIONS		13500	Collapsible tanks (1500 gallon capacity each) stored on Pollution barge
TOTAL CAPACITY			46350	

Section 25: Fowey Harbour Road Access Points

25.1 Introduction

The nature and character of the estuary and harbour make it essential that any pollution incident which it has been ascertained will not disperse naturally must be examined and dealt with as quickly as possible and areas of high risk protected.

The lack of suitable access points to the harbour from the land, the high rise and fall of the tide and the need for quick unhindered deployment of equipment makes the logistics of a shore based operation difficult if not impossible. The main response will be from the water and the equipment stored afloat. Road access points have been identified and are listed in *Section 25.2 below*.

25.2 Ordnance Survey Grid References for Points of Access to the Estuary

Ordnance Survey Landranger 200 Scale 1:50,000

- | | | | |
|-----------|----------------|------------|--|
| 1. | Grid Reference | 1040,5935 | Lostwithiel Coulson Park Road Entrance |
| 2. | Grid Reference | 1160,5700 | St. Winnow by the Church |
| 3. | Grid Reference | 1405,5705 | Lerryn Village Car Park |
| 4. | Grid Reference | 1230,5475 | Golant, By the Fishermen's Arms Public House |
| 5. | Grid Reference | 1470, 5445 | Penpoll At the top of Penpoll Creek |
| 6. | Grid Reference | 1290, 5300 | Mixtow |
| | | 1335, 5260 | Access from Yeate farm |
| | | 1320, 5310 | Access From Lombard Farm |
| 7. | Grid Reference | 1265,5220 | Fowey, Caffa Mill (follow B3269 sign posted to the docks from the Four turnings Roundabout) Car ferry Access Point to Boddinnick |
| | Grid Reference | 1255,5220 | Fowey, The Docks Road Entrance , Large Vehicles are advised to gain permission to use the par tunnel and private road from IMERYS Minerals Limited and not to enter Fowey by public highways. |

	Grid Reference	1260,5160	Fowey, Town Quay access by car only available in winter months
	Grid Reference	1270, 5175	Fowey, Albert Quay a small car park available 15 spaces for Cars only
	Grid Reference	1180,5110	Fowey, Readymoney Beach Limited vehicle access small vans & cars
8.	Grid Reference	1290, 5220	Boddinick Quay Car ferry Access Point to Boddinnick
9.	Grid Reference	1445, 5205	Pont at the Top of Pont Pill
10.	Grid Reference	1255,5105	Polruan, Town Quay limited vehicle access
	Grid Reference	1305,5140	Polruan, Cairn Beach No Road Access
	Grid Reference	1370,5120	Polruan, Pengegon (Private Road)

25.3 Fowey Harbour Road Access Points

FOWEY HARBOUR COMMISSION

HARBOUR OFFICE ALBERT QUAY FOWEY PL23 1AJ
Tel : 01726 832471 Fax : 01726 833738

