

Fowey Harbour Commissioners



FOWEY HARBOUR WASTE MANAGEMENT PLAN

Fowey Harbour Office
Albert Quay
Fowey
Cornwall
PL23 1AJ

Telephone Number: (01726) 832471/2

Fax Number: (01726) 833738

Email: fhc@foweyharbour.co.uk

Website: www.foweyharbour.co.uk

Reviewed March 2008

Contents

Contents	2
Section 1 Introduction	4
1.1 Strategic Aim	4
1.2 Objectives.....	4
1.3 Charges made for waste disposal	5
1.4 Other Waste Management Plans	5
Section 2 Commercial Operations	6
2.1 Introduction	6
2.2 Garbage.....	6
2.3 Food Wastes.....	6
2.4 Hold Cleanings.....	7
2.5 Hazardous and Chemical Waste	7
2.6 Oily Waste / Bilge Water – Dirty oil	7
2.7 Sewage.....	8
2.8 Fishing Operations	8
2.9 Charges for waste disposal and management to commercial vessels.....	9
2.10 Providing Information to Users	9
2.11 Minimising the amount of potential garbage.....	11
2.12 Collection.....	11
2.13 Notification of waste to be kept aboard or discharged	12
Section 3 Leisure	12
3.1 Introduction	12
3.2 Garbage and Recycling.....	13
3.3 Foodstuffs.....	16
3.4 Hazardous Waste	16
3.5 Oily Waste / Oily Water	17
3.6 Sewage.....	18
3.7 Charges for waste disposal and management from the leisure sector.....	19
3.8 Providing Information to Users	21
3.9 Minimising Potential Garbage.....	22
Section 4 Fowey Harbour Commissioners Operations	23
4.1 Introduction	23
4.2 Garbage and Recycling.....	23
4.3 Foodstuff	24
4.4 Chemical / Hazardous Waste	24
4.5 Oily Waste / Oily Water	25
4.6 Sewage.....	26
4.7 Costs of Disposal.....	26
4.8 Waste Minimisation	26
4.9 Providing Information to Staff	27

Section 5 Future operations	27
5.1 Review Procedures for this Plan	27
5.2 Actions to be taken	27
5.3 Continual Review	28
Section 6 Evaluation of Waste Reception Facilities	28
6.1 The importance of adequate reception facilities	28
6.2 Inadequate reception facilities to be reported in accordance with M Notice 1390.....	29
6.3 Ports and terminals must make a reasonable charge for waste reception facilities.....	29
6.4 All current sources of waste production identified.....	29
Section 7 Consultation, Complaints & Comments	29
7.1 Consultation	29
7.2 Complaints	30
7.3 Comments.....	31
Section 8 Appendixes	32

Section 1 Introduction

Fowey Harbour Commissioners are the Statutory Authority for Fowey Harbour and are responsible for providing management for waste disposal. The provisions for this management are laid out within the overall Port Waste Management Plan in compliance with the Merchant Shipping Notice M1709.

Fowey Harbour covers an area of nearly 1000 acres consisting of the whole Fowey Estuary. The Harbour caters for large numbers of commercial ships, resident and visiting craft and various commercial activities within its boundaries.

This Plan is split into three sections dealing with the differing requirements of the commercial and leisure sectors.

1.1 Strategic Aim

To promote the efficient and practicable disposal of all waste generated within Fowey Harbour

1.2 Objectives

- To comply with all legislation pertaining to the disposal of waste.
- To ensure that all craft using Fowey Harbour are able to land and dispose of all waste materials and to provide advice on how this must be achieved.
- To provide a framework for the co-ordinated management of waste associated with Fowey Harbour and to provide effective communications between the Harbour Authority, users, waste disposal authorities and regulators and contractors.
- To minimise the production of waste where possible
- To reduce the costs of waste disposal by minimising waste collected by private contractors
- To reuse or recycle waste where possible

- To dispose of waste responsibly in order to minimise negative environmental effects
- To promote education and awareness of wise waste management

1.3 Charges made for waste disposal

This legislation conforms to the European Community (EC) Directive 2000/59/EC on port reception facilities for ship-generated waste and cargo residues. In the UK this has been implemented through the *Merchant Shipping and Fishing Vessels (Port Waste Reception Facilities) Regulations 2003*, SI 2003 No. 1809 and is covered in this plan.

1.4 Other Waste Management Plans

Whilst Fowey Harbour Commissioners are responsible for the provision of the overall Port Waste Management Plan, it is the responsibility of organisations operating within the port to produce their own plan and submit it to the Harbour Commissioners for inclusion into the overall provisions.

1.4.1 **IMERYS Ports** produce a waste management plan for their Port operations at the Jetties in Fowey¹. These provisions are incorporated into the Fowey Harbour Waste Management Plan.

1.4.2 **Marinas**. There are no marinas or other operators within the Harbour area.

1.4.3 **Commercial enterprises** largely fall outside the requirements, however close liaison within this plan is encouraged, and plans written under other legislation may be lodged with Fowey Harbour Commissioners².

¹ See Appendix 16 - IMERYS Minerals Ltd. - Port of Fowey – Waste Management Plan

² See Appendix 7 – Commercial Activities in the Harbour Area

Section 2 Commercial Operations

2.1 Introduction

Some 98% of commercial vessels berth alongside the jetties operated by IMERYYS Ports to load china clay. These ships are in ballast and may wish to land hold cleanings from previous cargoes as well as oily waste and domestic waste products. The port does not handle hazardous cargoes or oil products. The Port of Fowey exports 800,000 tonnes of china clay annually in more than 300 ships.

2.2 Garbage

Every ship produces garbage whilst in port and prior to her arrival. There is therefore a need to provide adequate facilities for the anticipated volumes.

2.2.1 IMERYYS Ports as jetty operators engage contractors to provide skips at designated locations within the port area. Ship's personnel are advised of the location of skips³ on berthing and are given full instruction as to the waste facilities and procedures at the Port of Fowey.

2.2.2 Ships moored to commercial buoys in the harbour are required to store rubbish in contained areas on board. The Harbour Authority will provide a floating skip if the ship makes such a request to their agents. This service is provided in conjunction with contractors and possibly the local authority.

2.2.3 Recycling of waste is encouraged. Special skips are provided.

2.3 Food Wastes

Foodstuffs and catering waste can be placed in the garbage skip provided it is in secure bags.

2.3.1 Raw meats in small quantities may be disposed of in the skips provided, as these have secure lids and are leak-proof. Large quantities must be disposed of by arrangement with the ships' agents through special contractors, if necessary under the supervision of the Port Health Officer.

2.3.2 Catering wastes arriving on vessels from foreign countries are disposed of in accordance to the legislation enforced through DEFRA. Notice 2003 No. 1482 implements the EU directive 1774/2002 in the UK. This legislation also requires that a record is kept of any International Catering Waste

³ See Appendix 4 – Plan of Fowey Jetties Waste Reception Facilities

(Non EU waste) that is disposed of in order to form an audit trail. This has been incorporated into the waste notification procedure for ships.⁴

2.4 Hold Cleanings

Hold Cleanings are the by-product of previous cargoes and usually consist of sweepings and solid materials.

- 2.4.1 Skips are provided by arrangement with ships' agents. The skip(s) are either loaded directly onto the vessel or located as close to the vessel as possible on the adjacent jetty. These skips are of a different type to those provided for garbage and are not used for the latter.
- 2.4.2 Washings from the hold should be pumped into the ship's bilges for discharge ashore into road tankers (by arrangement with ships' agents), or into the ship's holding tanks, and should NOT be pumped into the harbour.

2.5 Hazardous and Chemical Waste

Hazardous and chemical wastes are not normally handled as cargo within the port area. The need to provide dedicated facilities is designated as low.

- 2.5.1 In the event that a ship wishes to dispose of chemicals or hazardous waste from the ship's stores or other sources the ships' agents will make special arrangements with approved and licensed contractors.
- 2.5.2 Pyrotechnics may be disposed of by arrangement with FHC and HM Coastguards.

2.6 Oily Waste / Bilge Water – Dirty oil

Oily waste / bilge water is produced aboard every vessel as a by-product of machinery operations. Pollution by oil and petroleum products within the harbour is low, however effective disposal under high operational standards are necessary to maintain this good water quality.

⁴ See Appendix 13 - Notification of ships waste form

-
- 2.6.1 Holding tanks are not provided within the port area. It is the Harbour Authorities' and IMERY'S Ports' policy for all oily waste to be removed from the port area to licensed waste receivers by fully licensed contractors.
- 2.6.2 Commercial and/or large vessels moored in the harbour with the need to discharge waste oil products should seek berthing arrangements at IMERY'S Ports berths for the agents to organise attendance of contractors.
- 2.6.3 The Harbour Authority and Jetty operators must be notified by the contractor about any intention to discharge oily waste prior to commencement. Vessels and contractors must comply with any conditions laid down by the Harbour Authority and Jetty operators.

2.7 Sewage

International Regulations govern the discharge of vessels' sewage in coastal waters, including harbours. The docks do not have an inbuilt system to take sewage from vessels for disposal treatment; therefore sewage must be either stored on board in holding tanks or disposed of through licensed contractors.

- 2.7.1 Ships moored to buoys or alongside jetties in Fowey Harbour should hold sewage in holding tanks and/ or treat on board in their own plant.
- 2.7.2 Vessels requiring sewage disposal while in the harbour should make application through their agents or the Harbour Authority. Licensed contractors will be engaged to attend and dispose of waste to approved sewage treatment works.

2.8 Fishing Operations

Commercial fishing operations within the port area are small. No more than six vessels land fish commercially in Fowey.

- 2.8.1 All fish landings are removed on landing by vehicle from the harbour area. No fish processing, selling or other operations take place in the harbour area. There is therefore no by-product or waste for disposal. All gutting and cleaning is carried out at sea.
- 2.8.2 Vessels operating from Fowey are mainly scallop or shellfish operators. There is very little waste material produced through the fishing or from equipment such as netting. All waste equipment is disposed of by operators to licensed sites or placed in FHC skips.
- 2.8.3 Any monofilament nets landed as waste are disposed of by licensed contractors.

2.9 Charges for waste disposal and management to commercial vessels

Fowey Harbour Commissioners make an all-inclusive Port charge for vessels using the Harbour. These include Harbour dues, Pilotage charges, lines fees and Port Waste Management. These charges are published by the authority with the percentage split associated to each function. Charges are based on Tonnes loaded or DWT (dead weight). Details are available from the Ships' Agents or from the Harbour Commissioners' website.

Waste Management charges include overall and dedicated services incurred, however specialised costs incurred by the Port may be charged as an itemised extra.

IMERYS Ports as terminal and Jetty operators make separate all inclusive charges for the services provided in their sector

The fee and its calculation is outlined in the Fowey Harbour Commissioners' charges brochure, available on the Fowey Harbour Commissioners' website.

2.10 Providing Information to Users

The importance of training, education and public awareness where pollution is concerned cannot be over-emphasised.

- 2.10.1 Ships personnel are advised of the location of the relevant skips on berthing and are given full instruction as to the waste facilities and procedures pertaining to the Port of Fowey. The ships' agents undertake this when first boarding the ship, in the form of verbal advice and a plan of the location of the waste disposal facilities⁵.
- 2.10.2 Posters and leaflets illustrating the pollution potential of garbage in the marine environment are distributed to the seafaring community. These draw attention to the international ban on dumping plastic garbage into the sea and the severe restrictions in the disposal of other forms of garbage. Also distributed are posters highlighting the availability of reception facilities in Fowey.
- 2.10.3 Information and educational material on shipboard waste management and procedures to achieve a high level of compliance should be issued from time to time by the ship owners. These could take the form of:
- 2.10.3.1 Guidance on procedures to adopt for ships visiting countries that have not yet ratified Annex V, or countries where the disposal of garbage from ships is expensive due to stringent national controls on pest and disease organisms⁶.
 - 2.10.3.2 Technical information on shipboard waste management methods such as health, safety, recycling, incineration, compaction, sorting and sanitation systems, packaging and provisioning methods.
 - 2.10.3.3 Educational material such as videotapes and training programmes. The material provided could usefully include: the responsibility of seafarers under national and international law, effects of plastic on sea animals, etc.

⁵ See Appendix 4 - Plan of Fowey Jetties Waste Reception Facilities

⁶ See Appendix 2 – Waste Management Legislation

2.11 Minimising the amount of potential garbage

2.11.1 Reusable packaging, containers, dunnage, shoring and linings can decrease waste substantially as can carefully controlled cargo operations to minimise cargo residues.

2.11.2 Operational waste generation is specific to individual ship activities and cargoes. It is recommended that manufacturers, shippers and ship operators consider the garbage associated with various categories of cargo and take actions as needed to minimise their generation. Suggested actions are listed below:

2.11.2.1 Consider replacing disposable plastic sheeting used for cargo protection with permanent, reusable covering material.

2.11.2.2 Consider stowage systems and methods that reuse coverings, dunnage, shoring, lining and packing materials.

2.11.2.3 Dunnage, lining and packaging materials generated in port during cleaning should preferably be disposed of to the port reception facilities and not retained on board for discharge at sea. Where the disposal of dunnage ashore is planned the Port Health Inspector should be consulted.

2.11.2.4 Attempt to reduce cargo residues through increasing loading, unloading and on board handling efficiencies.

2.11.2.5 Avoid cargo spillages during transfer operations, both on board and on the dockside. Spillages typically occur in port, and should be completely cleaned up prior to sailing. Once cleaned up, the spilt cargo should be either delivered into the intended cargo space or into the port waste reception facility. Shipboard areas where spillage is most common should be protected so that residues are easily recovered.

2.11.3 All operators of commercial craft and boatyards are encouraged to contain, compact and regulate rubbish packing and spent containers. Boatyards are particularly responsible for liaising with the customers using their facilities.

2.12 Collection

Procedures for collecting ship generated garbage are based on what can and cannot be discharged overboard while en route. To reduce or avoid the need for sorting after collecting, it is recommended that three categories of distinctively

marked garage receptacles be provided to receive garbage as it is generated. These separate receptacles (e.g. bags, or bins) would receive:

- Plastics and plastics mixed with non-plastic garbage;
- Food wastes (which includes materials contaminated by such wastes)
- Other garbage that can be disposed of at sea

Receptacles for each of the three categories of garbage should be clearly marked and be distinguishable by colour.

2.13 Notification of waste to be kept aboard or discharged

The procedures for reporting waste to be landed in the Harbour consist of a notification form based on that provided by the MCA⁷. This form provides information on the type of wastes held and the amounts to be kept on board until the next Port and the amount to be discharged in Fowey. Ships should complete this waste form and forward it to their agents, at least 24 hours prior to entrance into the harbour. The shipping agents then forward the completed form to the Harbour Office. Shipping agents have been consulted and informed of the procedures agreed for reporting waste.

The Environment Officer enters the data collected from these forms into a waste records database, where the data can be stored indefinitely and analysed for annual reports to the MCA and other authorities. Notifications will be kept for a full calendar year. The data is also fed into the existing waste database.

A Harbour Masters Notice⁸ has been published and sent to Ships' Agents for distribution to Masters and owners prior to arrival. Arrangements are published on the Fowey Harbour Commissioners' website.

Section 3 Leisure

3.1 Introduction

Fowey is a very busy leisure harbour, with approximately 1500 permanent moorings and 7200 visiting craft each year. The Harbours main period of use is between May and the end of September.

Local craft are largely situated in the lower estuary whilst the upper estuary caters for the smaller vessels. Particular problems occur at Golant with domestic

⁷ See Appendix 13 for a copy of the reporting form used in Fowey Harbour

⁸ See Appendix 11 for a copy of the Harbour Masters Notice regarding waste notification procedures

waste produced by harbour users. The facilities provided in the lower harbour are used by visitors and those using permanent moorings.

Visitors are largely accommodated on the east side of the lower harbour around Penleath Point into Pont Pill. Mixtow Pill is becoming more widely used as a result of the improved boat storage and launch facility there. Visiting craft produce large quantities of garbage with each craft averaging over four persons on board, and staying for two or more days. Facilities are geared to cope with this scale of operation given the time of the year.

Penmarlam boat storage site provides year round boat storage and launching facilities, and has a toilet and shower block. Visitors and seasonal storage customers use the boat storage and launching facility on the lower part of the site.

Penmarlam cottage which is located above the storage site is now in private ownership, and can accommodate up to six people.

3.2 Garbage and Recycling

Various methods of handling garbage generated in the harbour have been trialled and the current facilities are detailed below. Recycling is encouraged and receptacles are provided for this purpose.

3.2.1 A floating collection point with a closed refuse skip and recycling receptacles is provided on a pontoon moored in the entrance to Pont Pill.

Notices instruct visiting yachtsmen to place their non-recyclable rubbish in the skip. The skip is normally emptied on a weekly basis by Serco on behalf of Restormel Borough Council who provide it. In peak periods emptying may be more frequent. To empty, the skip is taken to the jetties where crange is provided by IMERYS Ports.



Afloat Waste Collection Point

3.2.2 In peak periods, FHC provide a garbage collection service from yachts. This service is an afloat operation and the bagged garbage collected is deposited in the floating skip or in the recycling receptacles. Bagged garbage can also be deposited in dedicated general or recycled waste wheelie bins at Albert Quay and in bins on the pontoons at Berrills Yard, Penmarlam (Mixtow) and in the lower harbour.



Albert Quay



Berrills Yard pontoon

3.2.3 Colour-coded receptacles for recyclable waste are provided on many of the visitors pontoons within the harbour area. Recyclable waste in the form of Glass and Tins/Plastic bottles collected by Harbour Patrol staff or in the colour-coded receptacles is fed into the main afloat receptacles positioned in the entrance to Pont Pill. These receptacles are emptied by Serco on behalf of Restormel B.C. who feed the material into their recycling scheme. To empty, the skips are taken to the jetties where crantage is provided by IMERYYS Ports.



Recycling bins on Underhills Pontoon

- 3.2.4 The bottle bank provided by Serco on behalf of RBC which was previously sited at Berrills Yard has been removed due to access issues when emptying. The receptacle has been re-sited at Caffa Mill car park.
- 3.2.5 Few visitors venture above Wiseman's Reach; waste reception facilities can be made available for yachtsmen at Golant.
- 3.2.6 Additional facilities are provided at Brazen Island Ship Repair Yard and waste can be deposited there by arrangement.



Top Yard

Penmarlam boat storage site users have access to a skip provided in the boat storage area. The Cottage has its own dustbins and this waste is fed into this disposal route. There are also receptacles for recyclable waste in the storage area.

- 3.2.7 The wheelie bins and skips are provided by FHC or contractors⁹ and are emptied on a regular basis.
- 3.2.8 Special events will generate more rubbish. Further collection facilities are provided by FHC & Serco on behalf of Restormel B.C. at their own sites for these.
- 3.2.9 All visiting yachts are provided with pamphlets and notices providing detailed information on disposal arrangements. Information is also displayed on all pontoon notice boards.

⁹ See Appendix 8 & 9 – List of Contractors and Duty of Care Statements and Licences

3.3 Foodstuffs

Foodstuffs and catering waste can be placed in the garbage skip provided it is in secure bags.

- 3.3.1 Raw meats in small quantities may be disposed of in the skips provided, as these have secure lids and are leak-proof.
- 3.3.2 Larger quantities must be disposed of by arrangement with the Harbour Commissioners through special contractors, if necessary under the supervision of the Port Health Officer.
- 3.3.3 Catering wastes arriving on vessels from foreign countries are disposed of in accordance to the legislation enforced through DEFRA. Notice 2003 No. 1482 implements the EU directive 1774/2002 in the UK. Due to the anticipated small quantities of Non EU wastes from the leisure sector, it has been agreed by an officer from the State Veterinary Service that FHC will provide a dedicated colour-coded (red) receptacle and any waste that is collected will be transferred to the IMERYYS system for disposal, accompanied by the relevant records.¹⁰ For further guidance, reference may be made to the Harbour Regulations & Harbour Masters Notices; this document may be accessed through the FHC website.

3.4 Hazardous Waste

Hazardous Waste produced by the leisure sector is low; however several products are dealt with by special arrangement.

In accordance with the European Hazardous Waste Directive 91/689/EEC for England and Wales, all FHC sites producing Hazardous Waste have been registered with the Environment Agency.

¹⁰ See Appendix 15 - Waste Transfer Note for International Catering Waste

- 3.4.1 Antifouling material, empty paint tins and brushes are collected and placed in small quantities in the Brazen Island skips provided. Disposal of waste paint is through specialised contractors. Washing off of old antifouling is restricted to dedicated and designed locations within the yards.
- 3.4.2 Batteries are collected by arrangement with the Harbour Office, for which a discretionary charge may be made to the client. Batteries are taken to FHC's Brazen Island site for disposal by a licensed contractor.
- 3.4.3 Coolants and corrosives are placed in specially marked containers and disposed of by recognised contractors.
- 3.4.4 Out of date pyrotechnics are stored in a special container and are collected regularly by Naval Bomb disposal teams from the Harbour Office.
- 3.4.5 Penmarlam boat storage site has three waste bins for the collection of dog foulings.



Dog bin at Penmarlam

3.5 Oily Waste / Oily Water

Oily Waste / Oily Water disposal requires a large amount of effort in order to reduce the amounts of oil entering the harbour from leisure craft. Dedicated facilities have been provided since 1992 with marked effects.

- 3.5.1 Oily water / dirty oil from leisure craft and small commercial craft up to 150ft (45m) in length may be deposited at Brazen Island or Berrills Yard sites. Collections have been made from the latter since 1995 using the central self bunded collection tank. Pure dirty oil in containers can be deposited at the designated sites or be given to the FHC patrol craft or refuse collection boat.
- 3.5.2 All oily waste is placed in dedicated self bunded tanks at Brazen Island. The tanks are emptied by specialist contractors and most oil is recycled.

The self bunded tanks are contained within metal frames to protect them and facilitate transport. These frames comply with the lifting regulations and are certificated.



Oily Waste Receptacle at Berrills Yard



Self bunded tank at Brazen Island

- 3.5.3 Leisure and small commercial craft are encouraged to use oil absorbent socks in bilges to reduce the amount of oil in bilge water. These materials are collected at the designated sites for disposal.
- 3.5.4 FHC operates an oily bilge water collection service upon request.

3.6 Sewage

The amount of sewage to the estuary from leisure vessels at peak periods is low.

- 3.6.1 A direct connection to the main sewage system was installed at Berrills Yard in 1995 when South West Water installed a new sewage scheme. Pontoon access makes this service available to leisure craft and small commercial craft. The pump out system is operated by tokens available free of charge from afloat staff and the Harbour Office.



Sewage pump-out facility at Berrills Yard Pontoon

- 3.6.2 Increasing numbers of boats have holding tanks; however legislation will be needed over and above FHC requirements to ensure craft do not discharge sewage into the harbour waters.
- 3.6.3 Chemical toilets are used by a few craft. These cannot be discharged into the mains sewage system. On request contractors are engaged by FHC to dispose of chemical toilet contents.
- 3.6.4 For those craft without holding tanks, the use of shore based toilets both public and in yacht / sailing clubs is encouraged.
- 3.6.5 Penmarlam boat storage site has septic tanks which are emptied as required by contractors. The tank located at the toilet and shower block is emptied on request from FHC. The septic tanks at Penmarlam cottage and the chemical toilet emptying point in the campsite are in private ownership.

3.7 Charges for waste disposal and management from the leisure sector

All charges relating to the disposal of waste and its management are included in the harbour dues made to all leisure and resident craft using the Harbour. Fowey Harbour Commissioners make an all-inclusive Port charge for vessels using the Harbour. These include Harbour dues, Pilotage charges, lines fees and Port Waste Management. These charges are published by the authority with the percentage split associated to each function. Waste Management charges include overall and dedicated services incurred, however specialised costs incurred by the Port may be charged as an itemised extra.

The fee and its calculation are outlined in the Fowey Harbour Commissioners' charges brochure, available on the Fowey Harbour Commissioners' website.

Where possible, costs are reduced by recycling which either keeps down the overall cost of the service or reduces the Harbour dues.

Leisure craft are not required to pre-report disposals, however if large amounts or specialised waste is to be disposed of, the Harbour Office should be advised. Details are published on the Fowey Harbour Commissioners' website.

3.7.1 **Domestic type garbage** is produced in relatively large quantities. This is collected and disposed of as a service included in harbour dues, as long as bagged material is placed in the receptacles provided by FHC ashore and afloat, or handed to the collection service at peak periods. At present IMERYS Ports provide free crantage for disposal of waste and Serco on behalf of Restormel B.C. dispose of waste from the afloat skips. FHC engage contractors for the hire and emptying of receptacles and disposal at shore sites¹¹.

Fowey Harbour Commissioners provide dedicated receptacles for the collection of recyclable material including glass, tins/plastic bottles; these are then emptied by Serco on behalf of Restormel B.C. Crantage is provided by IMERYS Ports.

Charges for disposal of special items outside of those mentioned in 3.7.1 will be made direct by contractors approved and engaged by FHC. Charges will vary according to quantity.

3.7.2 **Hazardous Waste** generated by the leisure sector will mostly be disposed of within harbour dues. Charges for the disposal of specialised materials will be made direct by the approved contractor.

3.7.3 **Oily Waste / Dirty Oil** will be disposed of free of charge providing users place the waste material in approved receptacles. A charge for attending vessels with specialised equipment for removing larger quantities may be made at the Harbour Masters discretion.

3.7.4 **Sewage** from leisure craft is, under normal circumstances, provided for within harbour dues. Large quantities or provision of services outside of port operating hours (0800-2000 hrs) may result in charges.

The pump out facility at Berrills Yard is operated by a **free** token system; these are available on request from Harbour Patrol or the Harbour Office.

¹¹ See Appendix 8 & 9 – List of Contractors and Duty of Care Statements and Licences

The associated costs for emptying the septic tanks at Penmarlam boat storage site are provided within the fees for those using the site.

- 3.7.5 Batteries will be collected by arrangement and a charge may be made to the user at the discretion of the Harbour Master.
- 3.7.6 In setting charges for the collection of waste the Harbour Commissioners reserve the right to alter or make such charges as they feel necessary.

3.8 Providing Information to Users

Training, education and public awareness of pollution is extremely important.

- 3.8.1 Posters and leaflets are distributed and displayed to illustrate the pollution potential of garbage in the marine environment and draw attention to the international ban on dumping plastic garbage into the sea and the severe restrictions in the disposal of other forms of garbage. These are distributed to the seafaring community along with posters highlighting the availability of reception facilities in Fowey¹².
- 3.8.2 Information and educational material regarding onboard waste management and procedures to achieve a high level of compliance should be issued from time to time to resident yacht owners. These could include:
 - 3.8.2.1 Guidance on procedures to adopt for ships visiting countries that have not yet ratified Annex V, or countries where the disposal of garbage from ships is expensive due to stringent national controls on pest and disease organisms.
 - 3.8.2.2 Technical information on shipboard waste management methods such as health, safety, recycling, incineration, compaction, sorting and sanitation systems, packaging and provisioning methods.
 - 3.8.2.3 Educational material such as training programmes and videos. The material provided could usefully include: the responsibility of seafarers under national and international law, effect of plastic on birds and mammals, etc.



The Port of Fowey participated in the Blue Flag scheme under the marina category and was awarded the Blue Flag for five years running. The Blue Flag Campaign is run by the

¹² See Appendixes 3, 4 & 5 – Plan of Fowey Harbour and Fowey Jetties Waste Reception Facilities & List of Waste Reception Facilities and Capabilities

Foundation for Environmental Education (FEE) and Environmental Campaigns (ENCAMS) and works towards sustainable development of beaches/marinas through strict criteria dealing with water quality, environmental education and information, environmental management, and safety and other services. The award under the marina category has been ceased from 2008 but may be re-introduced in the future. In the meantime, the Harbour Commissioners aspire to enhance their services to maintain the environmental management within the Harbour.

3.9 Minimising Potential Garbage

The ultimate waste minimisation strategy of zero discharge is unlikely to be achievable or cost effective. Waste minimisation and recycling generally results in financial benefits and will itself offset the increasing cost of offsite disposal.

3.9.1 Objectives

- Minimise waste generated at sea and/or in the Harbour by the leisure sector
- Segregate & recycle waste wherever possible

3.9.2 Solutions

- Where possible, encourage purchase of goods with minimum packaging
- Where possible, encourage port users to segregate their waste to allow recycling. The provision of clearly marked containers/areas for collection is an important part of this.
- Improve on site signing and supportive literature for waste reception facilities
- Review information contained in the Port Guide annually
- Investigate the provision of multi-lingual literature (French, Spanish, Belgium, Russian) to clearly inform the foreign visitor
- Give advice to Port users on the availability and location of waste reception facilities through Harbour Patrol and Harbour Office staff
- Encourage the use of the central tank for oily waste, and the sewage pump out facility at Berrills Yard
- Provide leisure users with the opportunity to comment on waste reception facilities.¹³



In minimising potential garbage, FHC are working closely with the RYA and BMF to support the Green Blue Campaign which encourages the leisure sector to act in a more environmentally conscious way, promoting recycling and waste minimisation.

¹³ See Appendix 6 – Consultation sign displayed at waste reception locations

Section 4 Fowey Harbour Commissioners Operations

4.1 Introduction

In providing services to the port, Fowey Harbour Commissioners generate different forms of waste from a number of sources. These include tug operations, dredging, a maintenance yard and an administrative office. With an operation covering these different sections, waste is both generated and dealt with in different ways. The plan covers disposal of waste from each section.

4.2 Garbage and Recycling

Garbage is dealt with from various operations as follows:

4.2.1 **Office:** All waste from the offices is bagged daily by cleaning staff and placed in the relevant receptacles located in the garage for disposal by contractor. For security reasons some paper is shredded. Where possible, paper, tins, plastic bottles and glass are recycled using the same collection route as the leisure waste recycling operation.



4.2.2 **Tugs, other craft and Pilot Boats:** All garbage on vessels is bagged at source in containers in the galley or on deck. Full bags are either deposited in the floating skip during summer months for disposal via Restormel Borough Council to a licensed site, or in a contractor's skip at Brazen Island or Albert Quay for disposal to a licensed site. Recycling wherever possible is the Harbour Commissioners' policy.



4.2.3 **Brazen Island Maintenance Yard:** all non-recyclable garbage is bagged and placed in a contractor's skip, when the skip is full it is removed to a licensed site by approved contractors.



- 4.2.4 **Penmarlam:** boat storage and slipway waste is collected in designated receptacles for disposal via a licensed contractor. A skip is provided for general waste and bins are provided for recyclables which are fed into the leisure waste recycling system.
- 4.2.5 **Old Station Yard:** when this site is used as a boat storage facility a skip is provided to collect general garbage and provision may be made for the collection of hazardous wastes. Yacht owners using this site are given guidelines to inform them of waste disposal facilities.
- 4.2.6 **Other Operations:** small quantities of garbage are returned to the office, maintenance yard or afloat centres for disposal through those facilities.

4.3 Foodstuff

The small quantities generated are normally disposed of along with garbage at the various work centres.

4.4 Chemical / Hazardous Waste

Low level hazardous waste is generated in relatively small quantities, however FHC endeavour to ensure that all such waste is disposed of in compliance with COSHH and other regulations together with manufacturers recommendations. In accordance with the European Hazardous Waste Directive 91/689/EEC for England and Wales, all FHC sites producing Hazardous Waste have been registered with the Environment Agency.

- 4.4.1 **Office:** hardly any hazardous waste is generated. In the event that it is, it is safely transported to the maintenance yard for disposal.
- 4.4.2 **Brazen Island Maintenance Yard Hazardous Waste** is initially stored in the various categories, if necessary in secured locations complying with storage regulations. Such waste as may be dealt with under special arrangements include batteries, acid, paint / paint tins, scrap metal, lagging, asbestos, cleaning solvents and lubricants. All of these are handled by licensed contractors in approved receptacles.

Scrap metal skip at Brazen Island



4.5 Oily Waste / Oily Water

Oily waste and oily water is generated in moderate amounts from craft and maintenance areas where machinery is in operation. FHC's policy is to use methods and practises to reduce the amounts being generated and transported.

4.5.1 **Tugs, other craft and Pilot Boats** are required to discharge all dirty oil and oily waste to the FHC reception facility at Brazen Island. Each craft has arrangements to hold oil on board and to carry out such discharges.

Records are kept of such oil discharges. Where practical, drip trays and absorbent materials are used to reduce the spillage of oily residues within the vessel. In the event of dirty oil being replaced this is pumped into the self bunded tanks for disposal. Oily bilge water is pumped into the Brazen Island maintenance yard holding tanks and disposed of via a licensed contractor.

4.5.2 **Brazen Island Maintenance Yard:** All oily waste from the FHC shore reception facility and from craft on the slipway under maintenance is placed in dedicated self bunded tanks at Brazen Island. Tanks are emptied by specialist contractors and most oil is recycled.

The self bunded tanks are contained within metal frames to protect them and facilitate transport. These frames comply with the lifting regulations and are certificated.

Specialist oils from machinery such as lathes are held in separate drums for disposal / recycling by contractors. Oily waste from all sources is dealt with centrally on Brazen Island, using the dedicated equipment.

4.6 Sewage

Sewage can now be prevented from entering the harbour and is handled by the South West Water sewage scheme.

4.6.1 **Tugs and other craft** will be fitted (when practical) with reception tanks for emptying into the reception facility at Berrills Yard. Meanwhile, crews are encouraged to use shore based facilities where possible.

4.6.2 **Pilot boats** are not fitted with toilets and due to the nature of operation crews are able to use shore facilities.

4.6.3 **Penmarlam** boat storage facility site has two chemical toilet units that are emptied by contractor on request.

4.7 Costs of Disposal

Costs of disposal are monitored continuously and met wholly from FHC operational expenditures.

4.8 Waste Minimisation

4.8.1 Objectives

- Minimise waste at source
- Reuse material where possible
- Collect and recycle

4.8.2 Solutions

- Make all reports and publications available on the FHC website for viewing by the public to reduce the paper used for photocopying or printing them in hard copy format.
- Reduce paper use, for example by;
 - Double sided printing & copying wherever possible
 - Making best use of electronic media where appropriate
 - Making use of scrap paper wherever possible
- Recycle paper where possible and provide bins to collect paper for recycling
- Purchase products with minimum packaging
- Reuse cardboard, plastic bags & packaging where possible
- Provide collection point for recyclables and feed this material into FHC's recycling scheme.

4.9 Providing Information to Staff

Training, education and staff awareness of pollution is extremely important.

- 4.9.1 Annually provide information to staff about their responsibilities with regard to the responsible and lawful disposal of all waste streams.
- 4.9.2 Display posters at all work centres that illustrate the pollution potential of garbage and other waste types in the marine environment.
- 4.9.3 All staff attend environmental awareness courses.

Section 5 Future operations

5.1 Review Procedures for this Plan

In recognising the changing needs for the disposal of waste generated in or landed in the harbour / port area, the Fowey Harbour Commissioners recognises the need for continual reviews and audits of the current arrangements.

This waste management plan will be revised annually by FHC as the Port Authority; the next review date will be March 2009. Any actions or changes that result from the review will be sent to the MCA for approval where appropriate.

It is the duty of the Environment Officer to carry out reviews and audits reporting directly to the Chief Executive and Harbour Master. An Annual report is made to the board and is published on the Fowey Harbour Commissioners website.

5.2 Actions to be taken

To achieve this, four actions will be taken:

- 5.2.1 To continually review all legislation and directives issued at European (EU), National and Local advisory levels ensuring that disposal complies with legislation and recommendations in force.
- 5.2.2 To meet regularly and/or discuss with all parties involved jointly with IMERYS Ports. These include contractors, waste authorities and the MCA.
- 5.2.3 To provide facilities and services requested by harbour users where practical to do so.
- 5.2.4 The status of waste reception facilities will be regularly monitored to ensure they are being used correctly and that they are emptied when required.

5.3 Continual Review

To back the measures put in place, continual reviews of the Harbour customers' needs and observations will be undertaken. This will include questionnaires to leisure users.

Section 6 Evaluation of Waste Reception Facilities

6.1 The importance of adequate reception facilities

The importance of adequate reception facilities for garbage at ports and harbours cannot be overstated. States that have ratified Annex V of the Convention are obliged to provide adequate reception facilities for garbage at their ports without causing undue delay to ships and according to the needs of ships using them. Such facilities are available at ports and terminals throughout the UK. Facilities should be readily available for ships' use and any disincentives to the use of reception facilities, such as difficulty of access or excessive charges should be pursued. Any particular difficulties encountered by ships wishing to discharge contaminated garbage or rags should also be pursued. Port reception facilities should at least comply with the Guidelines developed by the International Maritime Organisation.

6.2 *Inadequate reception facilities to be reported in accordance with M Notice 1390¹⁴.*

6.3 *Ports and terminals must make a reasonable charge for waste reception facilities.*

See sections 2.9 and 3.7.

6.4 *All current sources of waste production identified*

All current sources of waste production in the harbour areas have been identified. In 1996, data collection of the quantities of waste produced by the leisure sector, commercial operations and by Fowey Harbour Commissioners' own workings began. This data allows a working estimate of anticipated waste volumes to be extrapolated for the coming five year period. The process will become more accurate as more data is collected. This allows FHC to anticipate short comings in the facilities that they provide for the harbour users¹⁵.

Section 7 Consultation, Complaints & Comments

7.1 Consultation

In the drawing up of this plan consultation has taken place with Harbour users. In addition to the statutory consultation group, the following parties are consulted:

7.1.1 Commercial Sector - All ships cargoes are handled alongside berths owned & operated by IMERYYS Ports. 95% of ships have S.C.U.K. Ltd as agents; the remainder have Sander Stevens Shipping & W.D. Tamlyn & Co Ltd or none at all. All passenger vessels have appointed agents and liaise directly with the Harbour Authority.

¹⁴ See Appendix 14 - Waste Reception Facilities Reporting Form

¹⁵ See Appendix 10 - Waste Collection Records 1996 to date

Consultees are:-
IMERYYS Ports
S.C.U.K. Ltd.
Sander Stevens Shipping
W.D. Tamlyn & Co. Limited
Denholm Shipping } through S.C.U.K.
Cory Ship Agencies }
Fowey Pilots

7.1.2 Leisure Sector - Fowey Harbour Commissioners provide all the facilities for handling leisure sector waste within the port area. Consultation takes place on an ongoing and regular basis with all leisure users by means of circulars, questionnaires and personnel contact. FHC licensed mooring owners and visiting craft organisations connected to the leisure sector who have been consulted on waste management include:

Cruising Association	Friends of the Fowey Estuary
Fowey Estuary Partnership	Golant Quay Users Association
Fowey Diving Club	Polruan Angling Club
Fowey Gallants Sailing Club	River Fowey Gig Club
Fowey River Canoe Club	Royal Fowey Yacht Club
Foye Tightliners Angling Club	Royal Yachting Association

7.1.3 Other Authorities & Bodies Consulted

Caradon District Council	Parish Councils
Contractors	Polruan Town Trust
Comwall County Council	Port Health Authorities
Environment Agency	Restormel Borough Council

7.1.4 Other Consultees

Commercial fishing industry
Commercial Shellfisheries
Commercial Boatyards
Licensed Boatmen

7.2 Complaints

If any harbour user, statutory authority or member of the public has any complaints regarding the disposal of waste within the port area these should be directed to the Chief Executive and Harbour Master (address on cover sheet) or the local MCA Office at Falmouth or Plymouth.

Commercial ships and ships' agents using the Port may report any inadequacies to the Port Authority in accordance with MGN 253.¹⁶ The necessary forms may be obtained from the Harbour Office or from the ships' agents¹⁷.

All complaints will be recorded and investigated thoroughly by a competent person. The complaints will be kept on file and a record made of the investigation and any actions taken resulting from the outcome. Copies of findings and actions will be forwarded to those making a complaint together with the MCA and Environment Agency.

7.3 Comments

The Harbour Authority welcome comments, advice and suggestions on the plan and the future provision of waste facilities in the harbour.

See Appendix 12 for address list of main consultees

¹⁶ See Appendix 2 – Legislation affecting ships visiting Fowey Harbour

¹⁷ See Appendix 14 – Waste reception facilities reporting form

Section 8 Appendixes

1. **Definitions and Abbreviations**
2. **Waste Management Legislation**
A National Framework for dealing with Hazardous Containers washed up on the UK Shoreline
3. **Plan of Fowey Harbour Waste Reception Facilities**
4. **Plan of Fowey Jetties Waste Reception Facilities**
5. **List of Waste Reception Facilities and Capacities**
6. **Consultation sign displayed at waste reception locations**
7. **Commercial Activities in the Harbour Area**
8. **List of Approved Contractors and Contact Numbers Currently Used by Fowey Harbour Commissioners**
9. **Contractors Statements of Duty of Care and Licenses**
10. **Waste Collection Records 1996 to Date**
11. **Harbour Masters Notice relating to waste notification procedures**
12. **Address List of Main Consultees**
13. **Port Waste Disposal Information Form**
14. **Waste Reception Facilities Reporting Form**
15. **Waste Transfer Note for International Catering Waste**
16. **IMERYS Minerals Ltd. Port of Fowey Waste Management Plan**

Appendix 1 Definitions and Abbreviations

USED IN ASSOCIATION WITH M.C.A. REGULATIONS AND GUIDELINES

“Cargo residues” are defined as the remnants of any cargo material on board that cannot be placed in proper cargo holds (loading excess and spillage), or which remain in cargo holds and elsewhere after unloading procedures are completed (unloading residues and spillage). However, cargo residues are expected to be in small quantities.

“Cargo associated waste” means all materials which have become waste as a result of use on board a ship for cargo stowage and handling. Cargo-associated wastes includes but is not limited to dunnage, shoring, pallets, lining and packing materials, plywood, paper, cardboard, wire and steel strapping.

“Contaminated rags” are rags which have been saturated with a substance defined a harmful substance in the other annexes to the Convention¹⁸.

“Convention Ship” means a ship whose flag state is party to the Convention.

“Department” means the Department of Environment Transport & the Regions.

“Discharge” in relation to harmful substances or effluent containing such substances, means any release, howsoever caused, from a ship and includes any escape, disposal, spilling, leaking, pumping, emitting or emptying.

“Discharge” does not include:

- (i) dumping, within the meaning of the Convention on the Prevention of Marine Pollution by Dumping of Wastes and Other Matter, held at London on 13 November 1972; or
- (ii) release of harmful substances directly arising from the exploration, exploitation and associated offshore processing of sea-bed mineral resources; or
- (iii) release of harmful substances for purposes of legitimate scientific research into pollution abatement or control.

“Dishwater” is the residue from the manual or automatic washing of dishes and cooking utensils which have been pre-cleaned to the extent that any food particles adhering to them would not normally interfere with the operation of automatic dishwashers.

¹⁸ See Appendix 2 – Waste Management Legislation

“Domestic waste” means all types of food wastes and wastes generated in the living spaces on board the ship.

“Fishing gear” is defined as any physical device or part thereof or combination of items that may be placed on or in the water with the intended purpose of capturing, or controlling for subsequent capture, living marine or fresh water organisms.

“Food wastes” are any spoiled or unspoiled victual substances, such as fruits, vegetables, dairy products, poultry, meat products, food scraps, food particles and all other materials contaminated by such wastes, generated aboard ship principally in the galley and dining areas.

“Harmful substance” means any substance which, if introduced into the sea are liable to create hazards to human health, harm living resources and marine life, damage amenities or interfere with other legitimate uses of the sea, and includes any substance subject to control by other Regulations.

“Harbour areas” means

- (a)
 - (i) all areas of water within the statutory jurisdiction of a statutory harbour authority, other than the areas of water referred to in subparagraph (b)
 - (ii) any berth, abutting any of the areas of water falling within head (i) above, where the loading or unloading of any dangerous substance (as defined in the Dangerous Substances Regulations 1987) takes place (whether or not that berth is for other purposes under the statutory jurisdiction of the harbour authority),
 - (iii) any land, within the statutory jurisdiction of statutory harbour authority or occupied by a statutory harbour authority, used in connection with the loading or unloading of vessels,
 - (iv) a monobuoy connected to one or more storage facilities in a harbour area as defined above and its monobuoy area, but excluding -
- (b) areas of water which are within the statutory jurisdiction of another statutory harbour authority where those areas of water are used primarily by vessels using berths or land within the harbour area of that other statutory harbour authority (for the purpose of these Regulations (i.e. The Dangerous Substances 1987) the harbour area of that other statutory harbour authority is known as “an overlapping harbour area”).

“Garbage” means ship-generated garbage or solid waste as defined by the 1973 MARPOL Convention and means all kinds of victual, domestic and operational waste, excluding fresh fish and parts thereof, generated during the normal operation of the ship and liable to be disposed of continuously or periodically. Such garbage could include, but is not limited to, all plastics, food wastes, paper products, rags, woods, glass, metal, bottles, crockery and similar refuse.

“Greywater” means drainage from dishwater, shower, laundry, bath and washbasin drains and does not include drainage from toilets, urinals, hospitals, animal spaces and cargo spaces.

“IMO” means the International Maritime Organisation.

“Incident” means an event involving the actual or probable discharge into the sea of a harmful substance, or effluent containing such a substance.

“Maintenance waste” means materials collected by the engine department and the deck department while maintaining and operating a vessel, such as soot, machinery deposits, scraped paint, deck sweepings, wiping wastes, and rags, etc.

“Oily rags” are rags which have been saturated with oil as controlled in Annex 1 to the Convention.

“Operational wastes” means all cargo-associated waste and maintenance waste and cargo residues and include all materials which become wastes due to break bulk and other cargo operations, including dunnage, shoring, pallets, lining and packing materials, plywood, paper, cardboard, wire, nails and steel strapping cargo residues.

“Plastics” means a solid material which contains as an essential ingredient one or more synthetic organic high polymer or the fabrication into a finished product by heat and / or pressure. Plastics have material properties ranging from hard and brittle to soft and elastic. Plastics are used for a variety of marine purposes including, but not limited to, packaging (vapour-proof barriers, bottles, containers, liners), ship construction (fibreglass and laminated structures, siding, piping, insulation, flooring, carpets, fabrics, paints and finishes, adhesives, electrical and electronic components) disposable eating utensils and cups, bags, sheeting, floats, fishing nets, strapping banks, rope and line.

“Refuse” means wastes generated in living spaces of crew and passengers and consisting principally of paper products, textiles, glass, rags, bottles, plastic etc.

“Ships” as defined in the Regulations refers not only to the professional and commercial maritime community but also the non-commercial seafaring population as sources of pollution of the sea by garbage.

“Special area” means a sea area where for recognised technical reasons in relation to its oceanographic and ecological condition and to the particular character of its traffic the adoption of special mandatory methods for the prevention of sea pollution by garbage is required.

“Wastes” means useless, unneeded or superfluous matter which is to be discarded.

“BMF” is the British Marine Federation

“EC” is the European Community

“ENCAMS” are the Environmental Campaigns

“EU” is the European Economic Community

“FEE” is the Foundation for Environmental Education

“FHC” are Fowey Harbour Commissioners, the local Port Authority for the Fowey Estuary.

“HM Coastguard” is Her Majesty’s Coastguard

“IMERYYS” is IMERYYS Minerals Limited (formerly English China Clays)

“MCA” is the Maritime and Coastguard Agency

“M Notice” is a Merchant Shipping Notice

“nm” denotes a Nautical Mile

“Restormel B.C.” or “RBC” is Restormel Borough Council

“RYA” is the Royal Yachting Association

“S W Water” is the South West Water Company

Appendix 2 Waste Management Legislation

LEGISLATION AFFECTING SHIPS VISITING FOWEY HARBOUR

The prevention of pollution at sea is controlled under the **International Convention for the Protection of Pollution from Ships 1973 (CMD 5748)** and the related Protocol of in 1978 (CMD 7347) and referred to as the **MARPOL CONVENTION 73/78**.

MARPOL consists of five annexes that contain regulations on discharges of oil, noxious liquid substances in bulk, harmful substances in packaged form, sewage and garbage from ships.

The rules laid down in **MARPOL 73 / 78** apply to all UK ships and all ships in UK territorial waters, (extending 200 miles from the UK Coast), this includes fishing vessels, passenger ferries, small craft and yachts, harbour authorities and terminal operators. In the UK, MARPOL is implemented in Merchant Shipping (Prevention of Pollution from Garbage) Regulations 1998 and the Merchant Shipping (Port Waste reception facilities) regulations 1997, which set discharge requirements that are communicated via Merchant Shipping Notices (MSN), Marine Information Notes (MIN) and Marine Guidance Notes (MGN).

A summary of at sea garbage disposal regulations is included in the Merchant Shipping (Prevention of Pollution from Garbage) Regulations 1998.

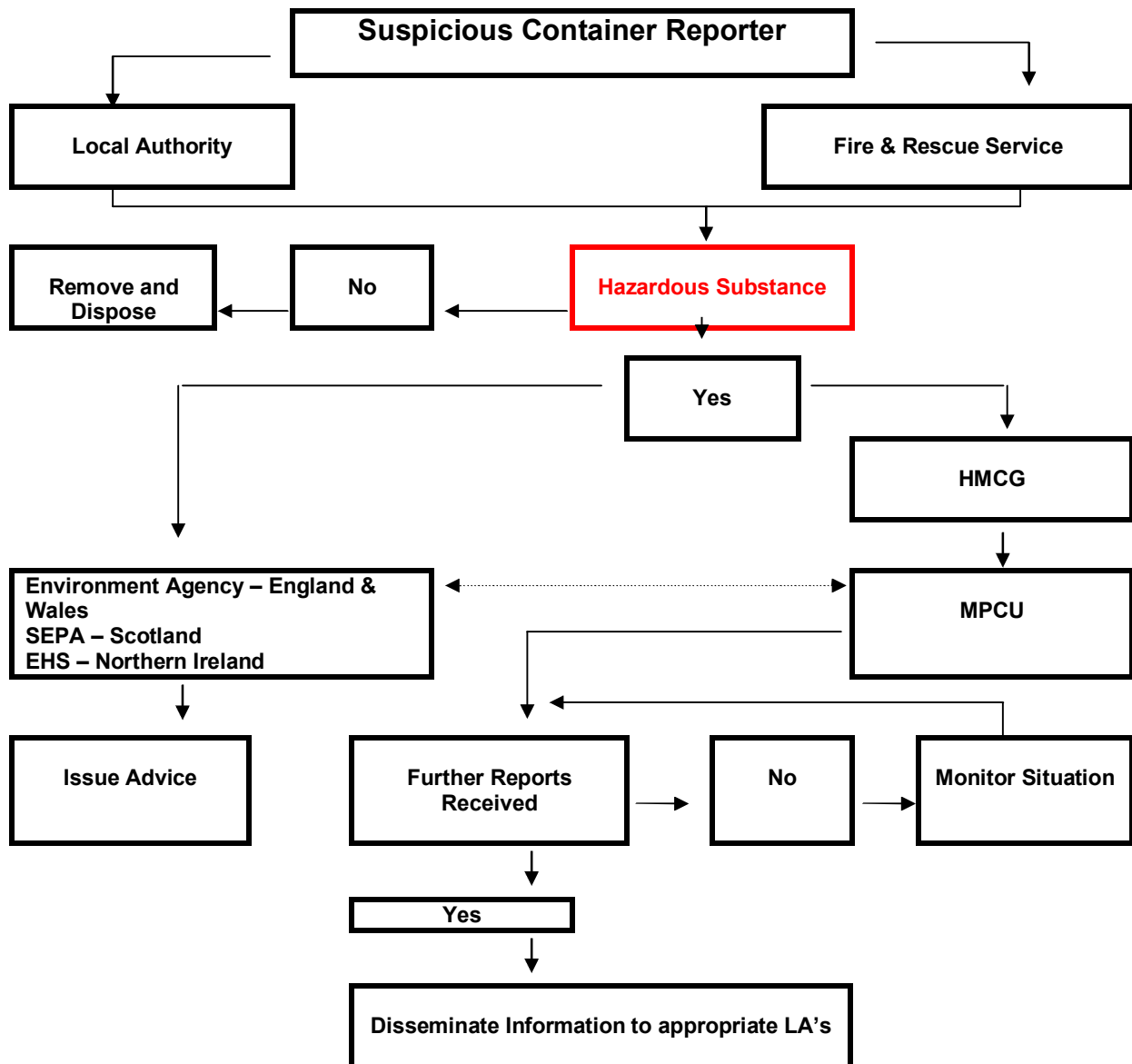
All relevant MSN, MIN & MGN Notices should be read in conjunction with this plan. Merchant shipping Notices MSN 1709 (M+F) and 1720 (M+F) and Marine Guidance Notice MGN 253 (M+F) form an integral part of the Regulations.

More recent legislation relates to the charges made to ships using the port to cover the costs of waste disposal. This legislation conforms to the European Community (EC) Directive 2000/59/EC on port reception facilities for ship-generated waste and cargo residues. In the UK this has been implemented through the new *Merchant Shipping and Fishing Vessels (Port Waste Reception Facilities) Regulations 2003*, SI 2003 No. 1809 and is covered in this plan. Guidance on the requirements under the new regulations can be found in MGN 253 (Port Waste Reception Facilities Regulations 2003), MGN 259 (Exemptions from the Port Waste Reception Facilities Regulations 2003) and the Guide to Good Practice available from the Environmental Quality section of www.mcga.gov.uk

Catering wastes arriving on vessels from foreign countries are disposed of in accordance to the legislation enforced through DEFRA. Notice 2003 No. 1482 implements the EU directive 1774/2002 in the UK. This regulation sets out requirements for the control, importation and disposal of animal by-products. Under the Regulation, International Catering Waste (ICW) is Category 1 material and must be disposed of accordingly.

A National Framework for dealing with Hazardous Containers washed up on UK Shorelines

The following flowchart illustrates the actions to be taken by each organisation in the event of incidents involving hazardous containers on the UK shoreline.



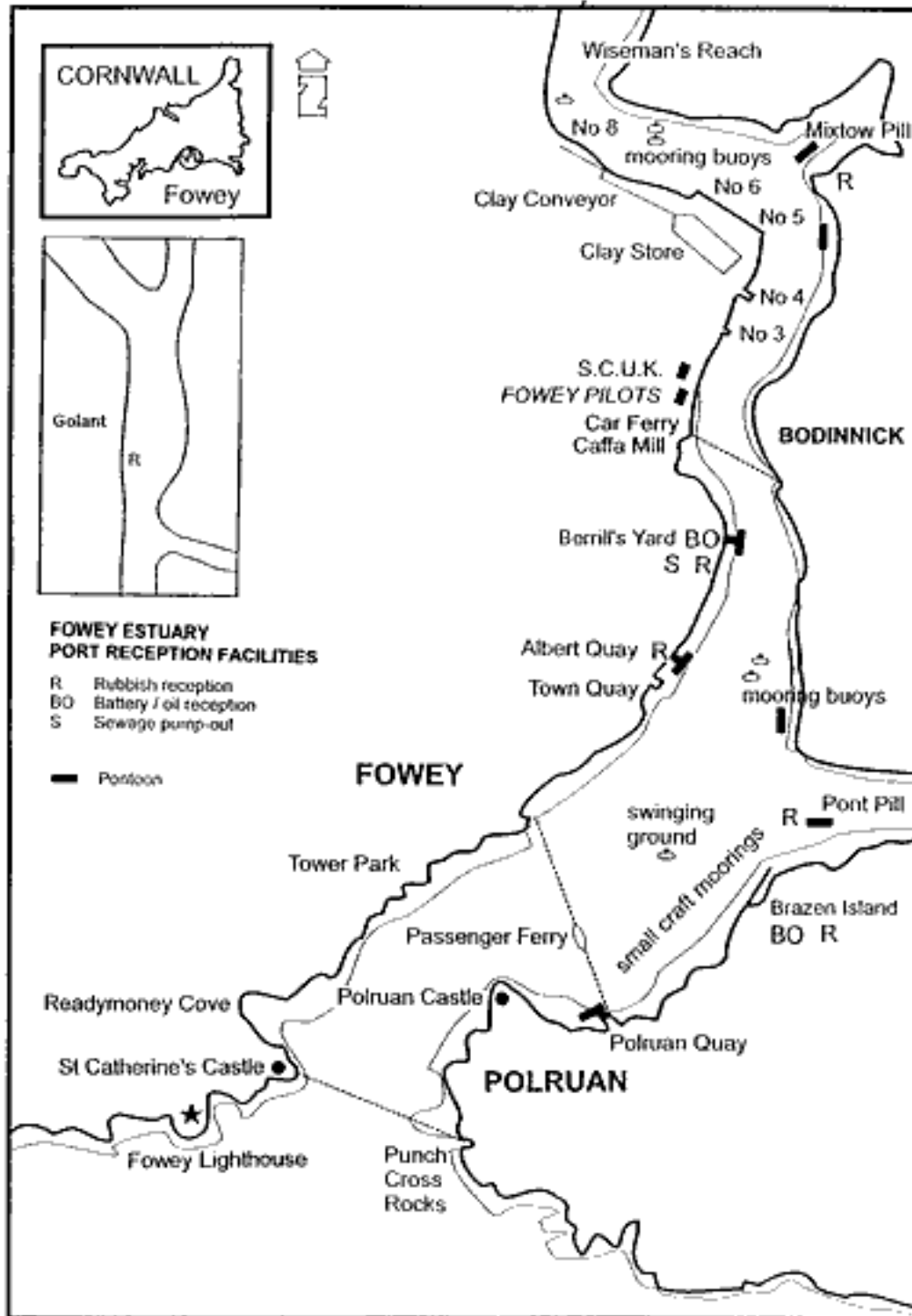
Abbreviations:

- EHS – Environment & Heritage Service
- HMCG – HM Coastguard
- MPCU – Marine Pollution Control Unit
- SEPA – Scottish Environment Protection Agency

Taken from MCA - Scientific, technical and Operational Advice Note STOp 5/98

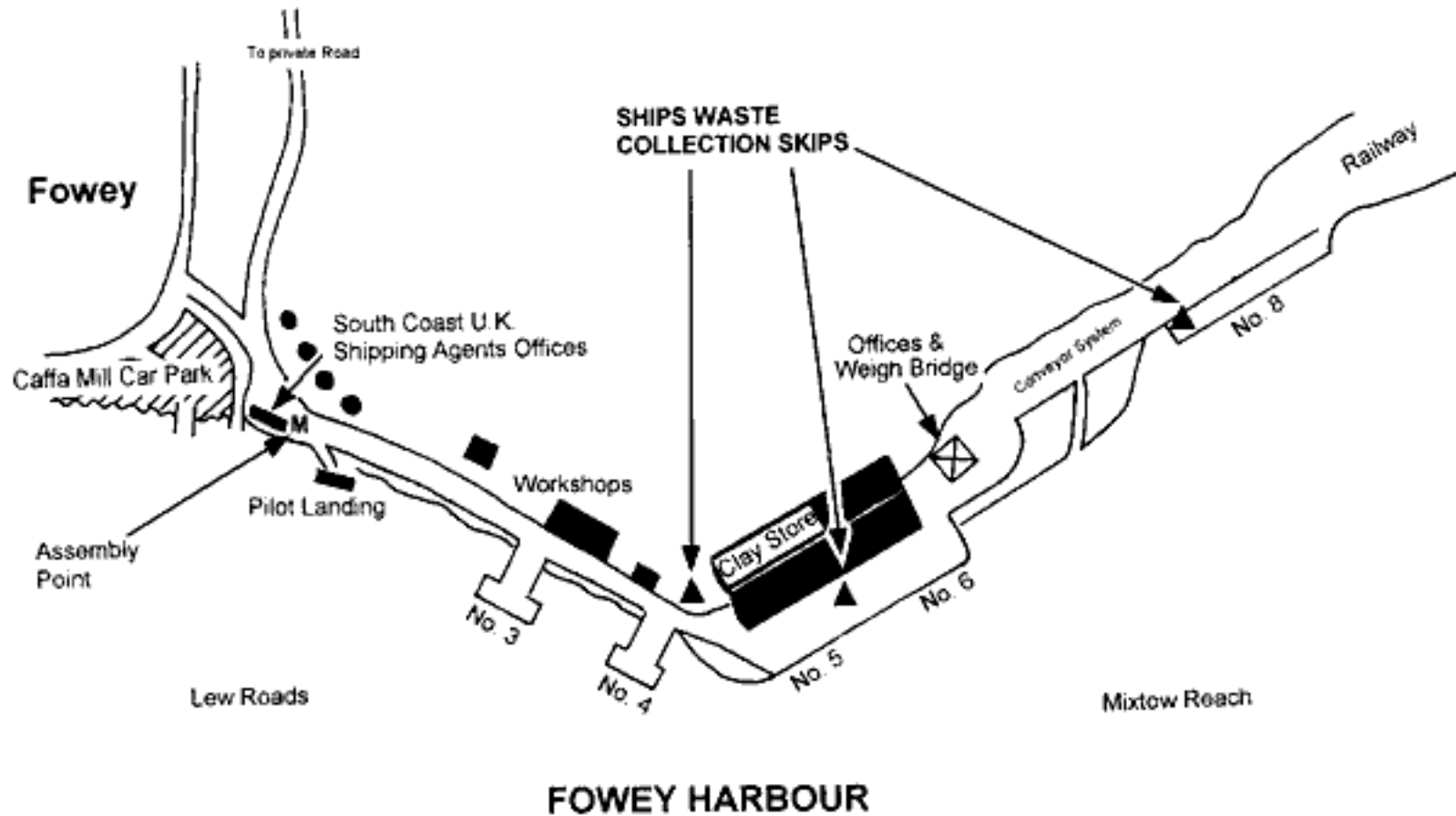
Appendix 3 Fowey Harbour Waste Reception Facilities

FOWEY ESTUARY PORT RECEPTION FACILITIES



Appendix 4 Waste Reception Facilities at IMERYYS Jetties – Fowey Docks

IMERYYS - FOWEY DOCKS



Appendix 5 Waste Reception Facilities

CONTRACTOR	WASTE TYPE	RECEPTION FACILITY	ARRANGEMENT FOR EMPTYING
Caradon District Council	Dog Waste Bins	Dedicated Dog waste reception bins at Penmarlam Site Individual Capacity 40 litres	Standing arrangement for fortnightly during quieter season weekly during summer emptying.
Cleansing Services Group	SCUK -Oily Waste	Road tanker comes to docks for direct unload	Shipping Agent request attendance to a vessel when required.
	FHC & Public - Oily Waste	Berrills Yard Public Collection Point Capacity 1,000 Litres Brazen Island Collection point Self bunded tanks capacity 2,500 Litres Collection point Folly capacity 10,000Lts (4 reception tanks) For emergency use only	Monitored by FHC Staff. Emptied when required. Transferred from Brazen Island to the docks in caged self bunded tanks when emptying required.
FHC Pump out facility	Sewage	Pump out facility situated at Berrills Yard	Free token system. Tokens available from Harbour Office or Harbour Patrol. Waste goes directly into the main sewage system. No chemical toilets to discharge, separate arrangements are made in this situation.
H & A Hygiene Services	Sanitary Waste	Plastic Bin situated in ladies toilet at Harbour Office Capacity 0.3kg	Emptied 8 times a year or on request when full
Henry Orchard & Sons	FHC & Public Batteries	Berrills Yard collection Point & FHC vessels & works at Brazen Island	Removed by H. Orchard & Son at the same time as scrap metal skip.
	Scrap Metal	Two Skips at Brazen Island Capacity 5 cu yds Will take up to 4-5 tons in weight.	Transported to the jetties for transfer, emptied when required.
Site Clearance Services (SCS)	Leisure Yachts & Admin Office Paper, plastics, food, etc.	Wheelie Bins Capacity 1100 litres	Standing arrangement for twice weekly emptying. Two bins located at Albert Quay and bin at Old Station Yard in summer period.

CONTRACTOR	WASTE TYPE	RECEPTION FACILITY	ARRANGEMENT FOR EMPTYING
Serco on behalf of Restormel Borough Council	Domestic waste from - Leisure Yachts	Floating skip moored mouth of Pont Pill Capacity 10 cu yds	As and when required, taken up to jetties and craned ashore
	Recyclables – Glass Tins/Plastic bottles	Dedicated receptacles afloat in mouth of Pont Pill Capacity 2 x 4 cu yds	As and when required, taken up to jetties and craned ashore and sent for recycling
Viridor Waste Management	FHC Commercial Waste	2 x Skip Capacity 14 cu yds each Wood skip Capacity 8 cu yds	As and when required, situated at Brazen Island maintenance yards
	IMERYS Commercial Waste	Skip Capacity 7.5 cu yds (weight around 4 1/2t)	Skip located at jetties for use by ships berthing along side, emptied every week whether full or not
	Hold sweeping from previous cargo & commercial waste	Skip	As and when requested by ship, organised by Shipping Agent
	Domestic Waste from – Penmarlam Boat Storage & Leisure Sector	Mini Skip Capacity 2 cu yds	Emptied when required.
Viridor Waste Management (Wet waste)	Liquid Waste Disposal (Sewage)	Penmarlam Boat Storage site Septic Tank Capacity 3200 gallons	Requested to attend to empty when required.

**Appendix 6 Consultation sign displayed at waste reception
locations**

**FOWEY HARBOUR
COMMISSIONERS**

**PLEASE REPORT ANY
COMMENTS REGARDING THE
WASTE RECEPTION FACILITIES
IN FOWEY HARBOUR TO:**

**ENVIRONMENT OFFICER
HARBOUR OFFICE
ALBERT QUAY
FOWEY**

**01726 832471
fhc@foweyharbour.co.uk**

THANK YOU

Appendix 7 Commercial Activities in the Harbour Area

All commercial businesses are responsible for the safe disposal of all waste streams that they generate. Literature is distributed by Fowey Harbour Commissioners from time to time to promote the safe disposal of waste from sites adjacent to or operating on the Estuary.

1. **P. WILLIAMS BOATYARD**
Small boat yard. Wooden boat builder, restoration, repairs and storage.

2. **C. TOMS & SON**
Two medium size slipways, boat building repairs and maintenance to small commercial and all leisure craft. Located in Polruan adjoining FHC Brazen Island yard. Operator of the Bodinnick and Polruan ferries.

3. **FOWEY BOAT YARD**
Small boat yard repairs and maintenance lay ups on west bank at north end of Fowey at Pottery Corner.

4. **FOWEY HARBOUR COMMISSIONERS**
Brazen Island - One medium/large slipway with workshops. Repairs and maintenance to harbour craft and outside contracts. Clean offs and lay ups. East bank of river at extreme North end of Polruan at Brazen Island shipyard, adjoining C. Toms & Sons yard.

Penmarlam - boat storage site and launching facility located at Mixtow.

5. **FOWEY HARBOUR MARINE ENGINEERS**
Marine engineers and boat maintenance, Station Lane Fowey.

6. **GOLANT MARINE**
Small boat maintenance.

7. **W. C. HUNKIN & SONS BOAT BUILDERS**
New commissions, restoration, repairs to traditional wooden boats, fitting out and insurance work.

8. **IMERY'S PORTS**
Commercial jetty operators. Located on the west bank of the estuary from Southern end of Wiseman's Reach to Caffa Mill. Five ship loading berths exporting China Clay.

9. **M. MORGAN**
Marine engineer and boat maintenance at Golant.

10. **ST. WINNOW YARDS**
Yacht and small craft lay up and maintenance located at St. Winnow.

Appendix 8 List of Approved Licensed Waste Disposal Contractors Currently Used (March 2008)

Company	Service	Telephone	Fax
Caradon District Council	Dog Bins	01579 341000	01579 341014
Cleansing Services Group	Waste Oil	01752 855011	01752 843080
H & A Hygiene Services	Sanitary Waste	01209 218845	01209 219397
Henry Orchard	Scrap Metal & Batteries	01726 850507	01726 851626
Serco / Restormel Borough Council	Bagged Rubbish in Floating Skip Recyclables	01726 223311	01726 223680
Site Clearance Services (SCS)	Bagged Rubbish in Wheelie Bins	01726 66886	
Viridor Waste Management	Bagged Rubbish in Skips	01726 850111 01579 342342	01726 851299
Viridor Waste Management (Wet waste)	Septic Tank emptying	01752 339551 07801 172332	01752 342663

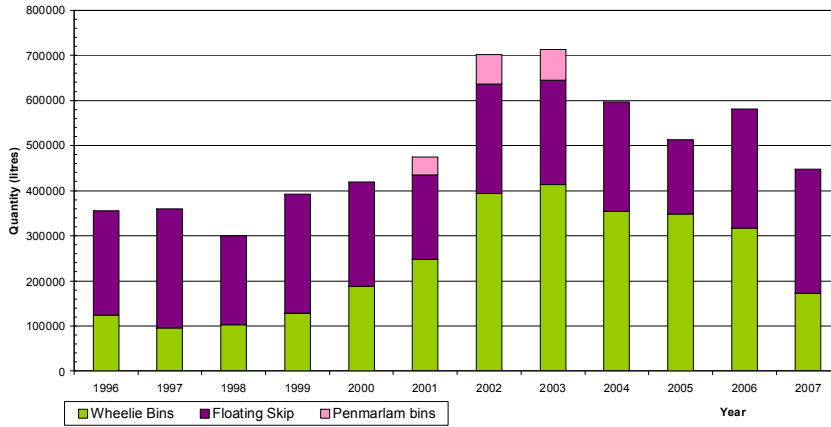
Appendix 9 Contractors Statements of Duty of Care and Licenses

CSG Sealand
H & A Hygiene Services
Henry Orchard
Site Clearance Services (SCS)
Viridor

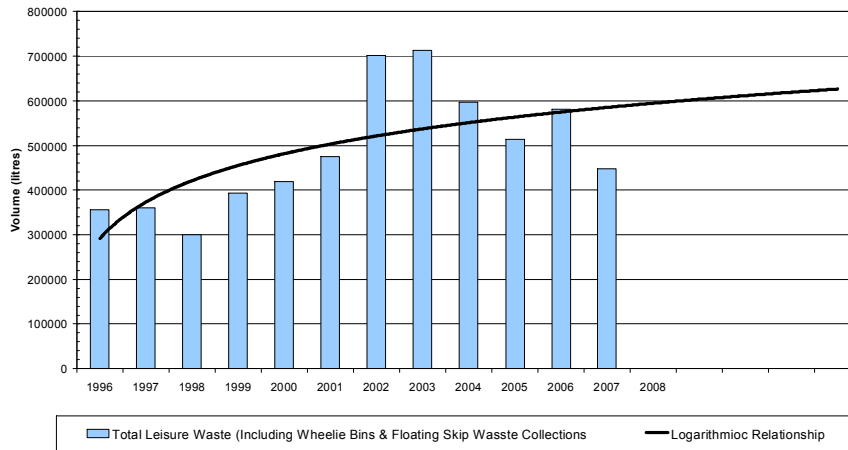
Copies of these are available in paper form from the Harbour Office.

Appendix 10 Waste Collection Records 1996 – 2007

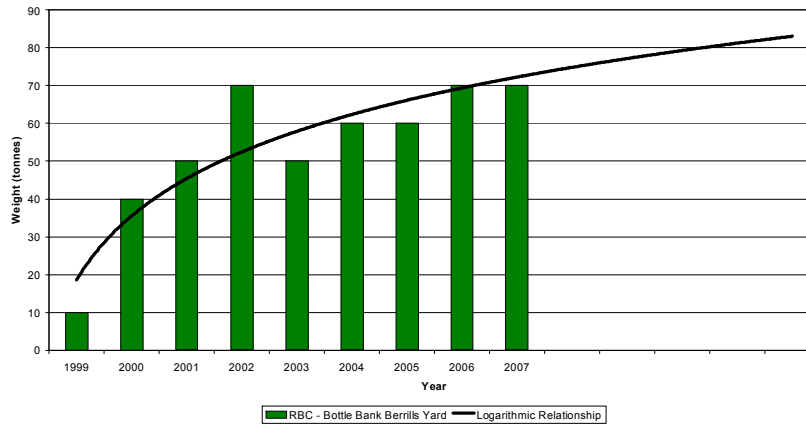
Fowey Harbour - Total Leisure Waste
(Paper, Card, Plastic & Food)



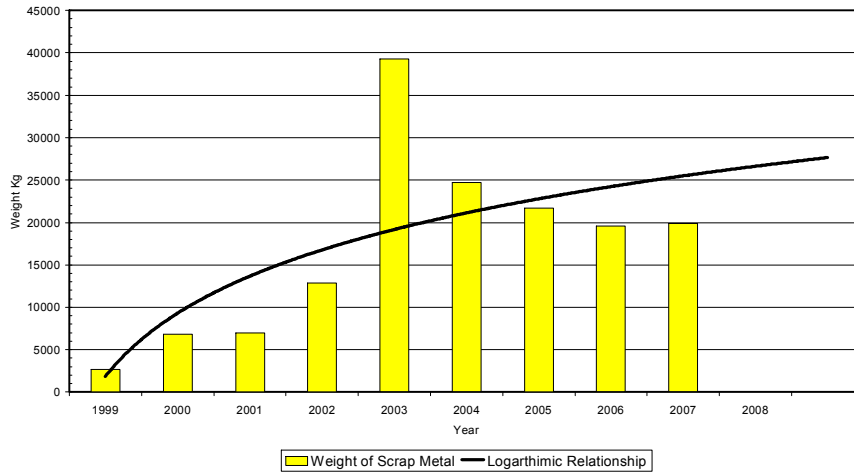
Fowey Harbour
Leisure waste projection



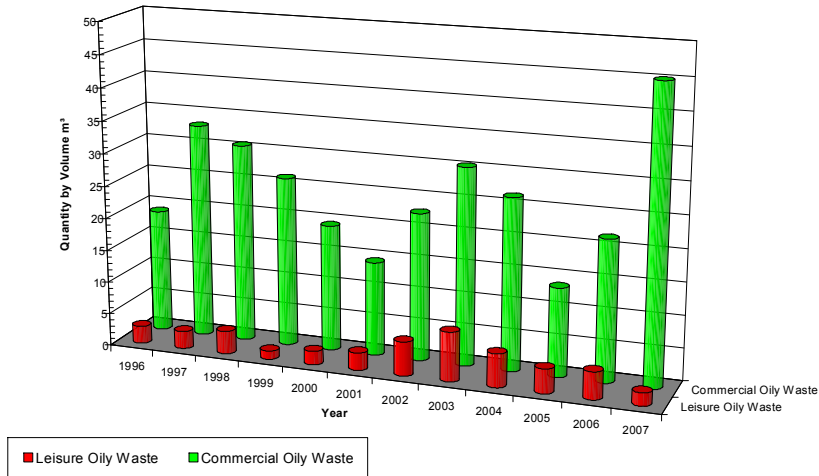
Restormel Borough Council Bottle Bank
Berrills Yard



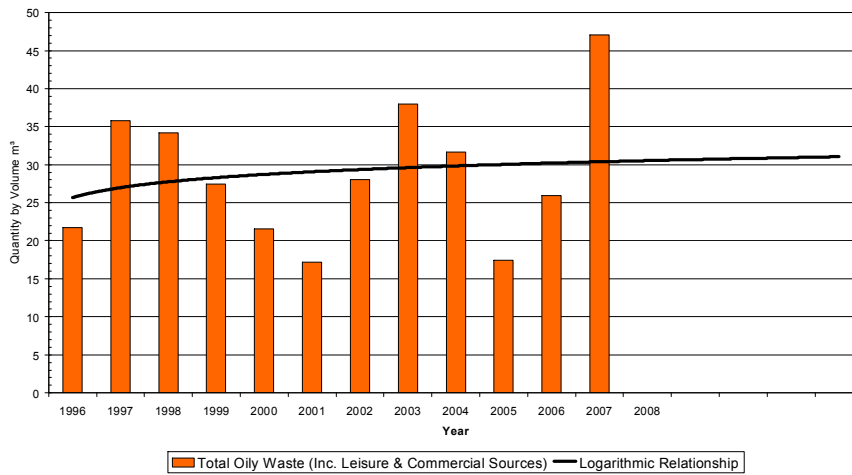
Fowey Harbour - FHC Scrap Metal



Fowey Harbour - Oily Waste



Fowey Harbour - Oily Waste



Appendix 11 Harbour Masters notice relating to waste notification procedures

FOWEY HARBOUR COMMISSIONERS



HARBOUR MASTES NOTICE 2008/06

Waste Discharge Reporting Arrangements

Masters &/or owners of ships wishing to discharge waste from vessels whilst in the port of Fowey should give 24 hours notice prior to arrival. This notice should be given through the ship's agent.

Agents will advise the Harbour Office, and where the vessel is berthed alongside the jetties IMERYS ports, by an approved method.

The latter will provide appropriate reception facilities ashore whilst Fowey Harbour will arrange afloat facilities.

Copies of the Fowey Harbour Waste Management plan are available from the Harbour office or on the website (www.foweyharbour.co.uk).

All standard charges for waste management are included in published harbour dues.

Please cancel Harbour Masters Notice 2006/02

HARBOUR MASTER
13/05/08

Distribution:
Pilots
Agents
MCA
Website

Appendix 12 Address List for Main Consultees

STATUTORY AUTHORITIES

Environmental Agency

Sir John Moore House
Victoria Square
BODMIN
PL31 1EB

Manley House
Kestrel Way
EXETER
EX2 7QL

Cornwall County Council

Waste Recycling Officer
County Hall
TRURO
TR1 3AY

Restormel Borough Council

39 Penwinnick Road
ST. AUSTELL
PL25 5DR

Serco

Tregongeeves Lane
ST. AUSTELL
PL26 7DS

Caradon District Council

Luxstowe House
LISKEARD
PL14 3DZ

Fowey Port Health Authority

24b Station Road
FOWEY
PL23 1DF

Maritime & Coastguard Agency (MCA)

105 Commercial Road
Spring Place
SOUTHAMPTON
SO15 1EG

Fowey Estuary Partnership

Involves many organisations with an involvement
in the management of the Fowey Estuary
C/o Harbour Office
Albert Quay
FOWEY
PL23 1AJ

PORT USERS:

IMERYS PORTS

Ross Facey
Ports Superintendent
Fowey Docks
FOWEY
PL23 1AL

IMERYS Environmental Department

Tehidy Centre
Bumgullow Lane
High Street
ST. AUSTELL
PL26 7TQ

S.C.U.K. Ltd.

Ben Jones
Agency Manager
Fowey Docks
FOWEY
PL23 1AL

SANDERS STEVENS SHIPPING

Victoria Wharf
Coxside
PLYMOUTH
PL4 0RF

W.D. Tamlyn & Co Limited

Atlantic Building
Queen Annes Battery
PLYMOUTH
PL4 0LP

Marine & Fisheries Agency (MFA)

District Fisheries Officer
46 Fore Street
NEWLYN
TR18 5JR

Appendix 13 Port Waste Disposal Information Form

South Coast UK The Docks Fowey PL23 1AL

Notification of Waste
Fowey

Vessel Name		IMO Number	
Port & Berth		Date	

Marpol Cat.	Type	Specification	Delivered at Port/Fowey
1 Oil	Cargo residues		
	Bilges		
	Sludge		
	Dirty ballastwater		
	Other(specify)		
11 Chemicals	Cargo residues		
	wash water		
	Other(specify)		
1V Sewage	Black water		
	Grey water		
V Garbage	International Catering Waste	Non EU waste	
	Food waste (EU origin)	EU waste	
	Plastic		
	Other(specify)		
	Dry-cargo residues(specify)		
	Cargo assoc. waste		
	small dangerous waste		

Signed for Ship _____ Signed for Port _____

Date _____

please stamp _____ South Coast UK as agent only

Par and Fowey Waste Management Plan 30/11/2005

Appendix 14 Waste Reception Facilities Reporting Form

FOWEY HARBOUR COMMISSIONERS

Harbour Office, Albert Quay, Fowey Cornwall, PL23 1AJ
Telephone: 01726 832471/2 Fax: 01726 833718
Email: fhc@foweyharbour.co.uk

Harbour Master and Chief Executive
Capt M J Sutherland,
Master Mariner, MNI, MRIN



PORT OF FOWEY Waste reception Facilities Reporting Form	
VESSEL DETAILS	
Name.....	Date.....
Jetty.....	Time.....
Ships Agents.....	
WASTE DETAILS (waste to be offloaded in Fowey)	
Waste type.....	Quantity.....
Were adequate facilities available? YES / NO	
Comments.....	
.....	
.....	
.....	
Name (print).....	Signature.....



Member of British Port Association and South West Ports Association

Appendix 15 Waste Transfer Note for International Catering Waste

FOWEY HARBOUR COMMISSIONERS

Harbour Office, Albert Quay, Fowey, Cornwall, PL23 1AJ
Telephone: (01726) 832471/2 Fax: (01726) 833738
Email: fhc@foweyharbour.co.uk Website: www.foweyharbour.co.uk

Chief Executive & Harbour Master Capt. M. J. Sutherland, Master Mariner, MNI, MRIN	Assistant Harbour Master Capt. M. K. Hodson Master Mariner
------------------------------------------------------------------------------------------	------------------------------------------------------------------



INTERNATIONAL CATERING WASTE – WASTE TRANSFER NOTE

Date: _____

Waste Producer

FOWEY HARBOUR COMMISSIONERS
HARBOUR OFFICE
ALBERT QUAY
FOWEY
CORNWALL
PL23 1AJ

Waste Receiver

IMERYS MINERALS LTD.
FOWEY DOCKS
FOWEY
CORNWALL

SIGNATURE _____

SIGNATURE _____

Type of Waste _____ International Catering Waste (Non EU waste) _____

Quantity of Waste

(Estimated) _____



**Appendix 16 IMERYS Minerals Ltd. Port of Fowey
Waste Management Plan**